

Product datasheet for **TA313270**

DDX19B Rabbit Polyclonal Antibody

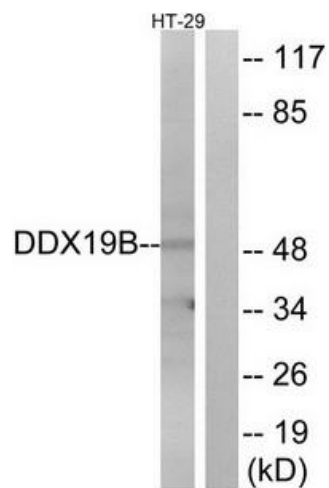
Product data:

Product Type:	Primary Antibodies
Applications:	WB
Recommended Dilution:	WB: 1:500~1:3000, ELISA: 1:10000
Reactivity:	Human, Mouse
Host:	Rabbit
Isotype:	IgG
Clonality:	Polyclonal
Immunogen:	The antiserum was produced against synthesized peptide derived from internal of human DDX19B.
Formulation:	Phosphate buffered saline (without Mg ²⁺ and Ca ²⁺), pH 7.4, 150mM NaCl, 0.02% sodium azide and 50% glycerol.
Concentration:	lot specific
Purification:	The antibody was affinity-purified from rabbit antiserum by affinity-chromatography using epitope-specific immunogen.
Conjugation:	Unconjugated
Storage:	Store at -20°C as received.
Stability:	Stable for 12 months from date of receipt.
Gene Name:	DEAD-box helicase 19B
Database Link:	NP_001014449 Entrez Gene 234733 Mouse Entrez Gene 11269 Human Q9UMR2
Synonyms:	DBP5; DDX19; RNAh
Note:	DDX19B antibody detects endogenous levels of total DDX19B protein.



[View online »](#)

Product images:



Western blot analysis of extracts from HT-29 cells, using DDX19B antibody. The lane on the right is treated with the synthesized peptide.