

## Product datasheet for **TA313268**

### AKT1 Rabbit Polyclonal Antibody

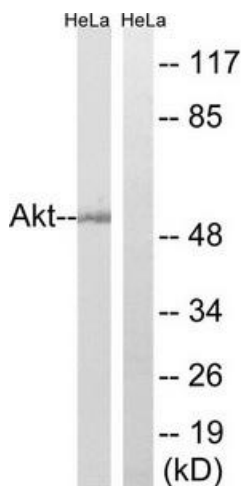
#### Product data:

Product Type:	Primary Antibodies
Applications:	IHC, WB
Recommended Dilution:	WB: 1:1000~1:3000, IHC: 1:50~1:100, ELISA: 1:10000
Reactivity:	Human, Mouse, Rat
Host:	Rabbit
Isotype:	IgG
Clonality:	Polyclonal
Immunogen:	This antiserum was produced against synthesized non-phosphopeptide derived from human Akt around the phosphorylation site of Serine 473.
Formulation:	Phosphate buffered saline (without Mg <sup>2+</sup> and Ca <sup>2+</sup> ), pH 7.4, 150mM NaCl, 0.02% sodium azide and 50% glycerol.
Concentration:	lot specific
Purification:	The antibody was affinity-purified from rabbit antiserum by affinity-chromatography using epitope-specific immunogen.
Conjugation:	Unconjugated
Storage:	Store at -20°C as received.
Stability:	Stable for 12 months from date of receipt.
Gene Name:	AKT serine/threonine kinase 1
Database Link:	<a href="#">NP_001014431</a> <a href="#">Entrez Gene 11651 Mouse</a> <a href="#">Entrez Gene 24185 Rat</a> <a href="#">Entrez Gene 207 Human</a> <a href="#">P31749</a>
Synonyms:	AKT; CWS6; PKB; PKB-ALPHA; PRKBA; RAC; RAC-ALPHA
Note:	Akt(Ab-473) Antibody detects endogenous levels of total Akt protein.
Protein Families:	Druggable Genome, ES Cell Differentiation/IPS, Protein Kinase

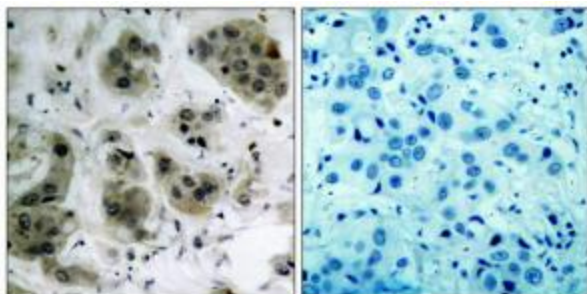

[View online »](#)

**Protein Pathways:**

Acute myeloid leukemia, Adipocytokine signaling pathway, Apoptosis, B cell receptor signaling pathway, Chemokine signaling pathway, Chronic myeloid leukemia, Colorectal cancer, Endometrial cancer, ErbB signaling pathway, Fc epsilon RI signaling pathway, Fc gamma R-mediated phagocytosis, Focal adhesion, Glioma, Insulin signaling pathway, Jak-STAT signaling pathway, MAPK signaling pathway, Melanoma, mTOR signaling pathway, Neurotrophin signaling pathway, Non-small cell lung cancer, Pancreatic cancer, Pathways in cancer, Progesterone-mediated oocyte maturation, Prostate cancer, Renal cell carcinoma, Small cell lung cancer, T cell receptor signaling pathway, Tight junction, Toll-like receptor signaling pathway, VEGF signaling pathway

**Product images:**


Western blot analysis of extracts from HeLa cells, using Akt (Ab-473) Antibody. The lane on the right is treated with the synthesized peptide.



Immunohistochemistry analysis of paraffin-embedded human breast carcinoma tissue, using Akt (Ab-473) Antibody. The picture on the right is treated with the synthesized peptide.