

Product datasheet for **TA313245**

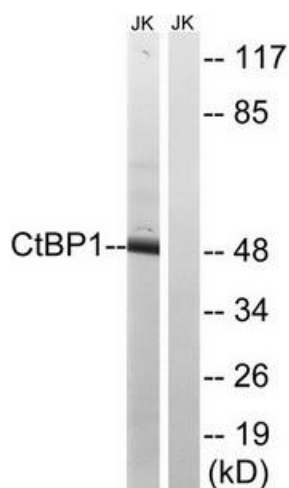
CTBP1 Rabbit Polyclonal Antibody

Product data:

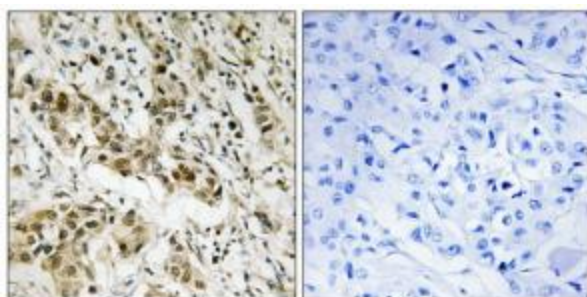
Product Type:	Primary Antibodies
Applications:	IHC, WB
Recommended Dilution:	WB: 1:500~1:3000, IHC: 1:50~1:100, ELISA: 1:20000
Reactivity:	Human, Mouse, Rat
Host:	Rabbit
Isotype:	IgG
Clonality:	Polyclonal
Immunogen:	The antiserum was produced against synthesized non-phosphopeptide derived from human CtBP1 around the phosphorylation site of serine 422 (A-P-SP-P-G).
Formulation:	Phosphate buffered saline (without Mg ²⁺ and Ca ²⁺), pH 7.4, 150mM NaCl, 0.02% sodium azide and 50% glycerol.
Concentration:	lot specific
Purification:	The antibody was affinity-purified from rabbit antiserum by affinity-chromatography using epitope-specific immunogen.
Conjugation:	Unconjugated
Storage:	Store at -20°C as received.
Stability:	Stable for 12 months from date of receipt.
Gene Name:	C-terminal binding protein 1
Database Link:	NP_001012632 Entrez Gene 13016 Mouse Entrez Gene 29382 Rat Entrez Gene 1487 Human Q13363
Synonyms:	BARS
Note:	CtBP1 (Ab-422) antibody detects endogenous levels of total CtBP1 protein.
Protein Pathways:	Chronic myeloid leukemia, Notch signaling pathway, Pathways in cancer, Wnt signaling pathway



[View online »](#)

Product images:

Western blot analysis of extracts from Jurkat cells, using CtBP1 (Ab-422) antibody. The lane on the right is treated with the synthesized peptide.



Immunohistochemistry analysis of paraffin-embedded human breast carcinoma tissue using CtBP1 (Ab-422) antibody. The picture on the right is treated with the synthesized peptide.