

## Product datasheet for **TA313244**

### LGR6 Rabbit Polyclonal Antibody

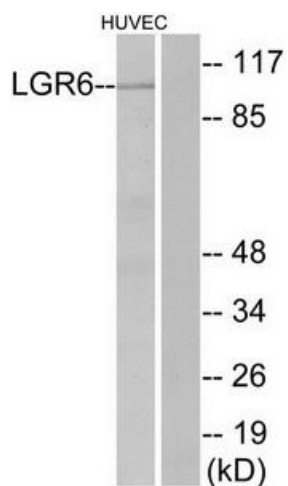
#### Product data:

Product Type:	Primary Antibodies
Applications:	IF, WB
Recommended Dilution:	WB: 1:500~1:3000, IF: 1:100~1:500, ELISA: 1:1000
Reactivity:	Human
Host:	Rabbit
Isotype:	IgG
Clonality:	Polyclonal
Immunogen:	The antiserum was produced against synthesized peptide derived from internal of human LGR6.
Formulation:	Phosphate buffered saline (without Mg <sup>2+</sup> and Ca <sup>2+</sup> ), pH 7.4, 150mM NaCl, 0.02% sodium azide and 50% glycerol.
Concentration:	lot specific
Purification:	The antibody was affinity-purified from rabbit antiserum by affinity-chromatography using epitope-specific immunogen.
Conjugation:	Unconjugated
Storage:	Store at -20°C as received.
Stability:	Stable for 12 months from date of receipt.
Gene Name:	leucine-rich repeat containing G protein-coupled receptor 6
Database Link:	<a href="#">NP_001017403</a> <a href="#">Entrez Gene 59352 Human</a> <a href="#">Q9HBX8</a>
Synonyms:	GPCR; VTS20631
Note:	LGR6 antibody detects endogenous levels of total LGR6 protein.
Protein Families:	Druggable Genome, Transmembrane

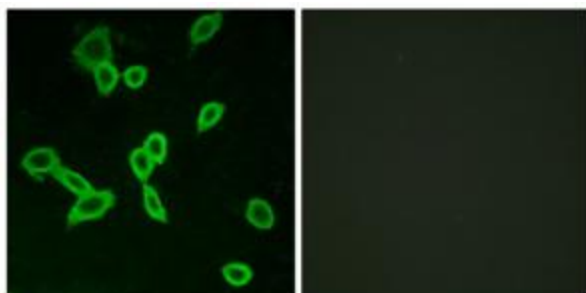


[View online »](#)

## Product images:



Western blot analysis of extracts from HUVEC cells, using LGR6 antibody. The lane on the right is treated with the synthesized peptide.



Immunofluorescence analysis of LOVO cells, using LGR6 antibody. The picture on the right is treated with the synthesized peptide.