

Product datasheet for **TA313242**

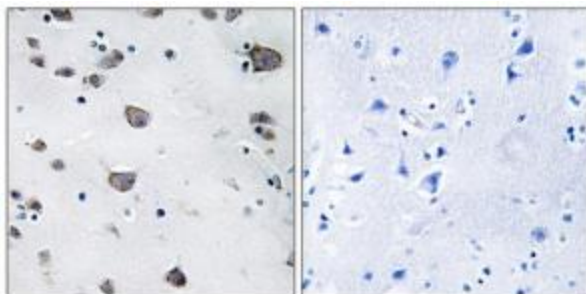
AIFM3 Rabbit Polyclonal Antibody

Product data:

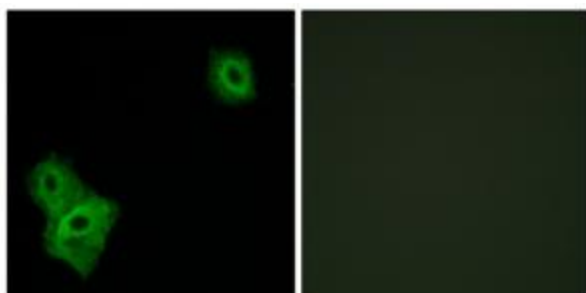
Product Type:	Primary Antibodies
Applications:	IF, IHC
Recommended Dilution:	IHC: 1:50~1:100, IF: 1:100~1:500, ELISA: 1:40000
Reactivity:	Human, Mouse
Host:	Rabbit
Isotype:	IgG
Clonality:	Polyclonal
Immunogen:	The antiserum was produced against synthesized peptide derived from internal of human AIFM3.
Formulation:	Phosphate buffered saline (without Mg ²⁺ and Ca ²⁺), pH 7.4, 150mM NaCl, 0.02% sodium azide and 50% glycerol.
Concentration:	lot specific
Purification:	The antibody was affinity-purified from rabbit antiserum by affinity-chromatography using epitope-specific immunogen.
Conjugation:	Unconjugated
Storage:	Store at -20°C as received.
Stability:	Stable for 12 months from date of receipt.
Gene Name:	apoptosis inducing factor, mitochondria associated 3
Database Link:	NP_653305 Entrez Gene 72168 Mouse Entrez Gene 150209 Human Q96NN9
Synonyms:	AIFL
Note:	AIFM3 antibody detects endogenous levels of total AIFM3 protein.
Protein Families:	Druggable Genome



[View online »](#)

Product images:

Immunohistochemistry analysis of paraffin-embedded human brain tissue, using AIFM3 antibody. The picture on the right is treated with the synthesized peptide.



Immunofluorescence analysis of A549 cells, using AIFM3 antibody. The picture on the right is treated with the synthesized peptide.