

## Product datasheet for **TA313241**

### NME2 Rabbit Polyclonal Antibody

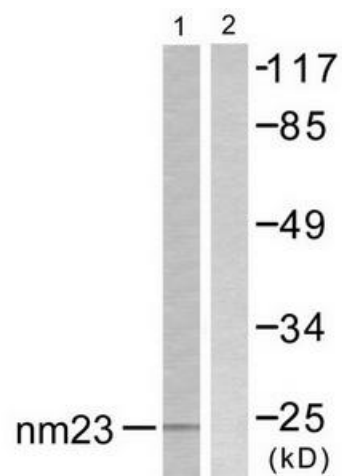
#### Product data:

Product Type:	Primary Antibodies
Applications:	WB
Recommended Dilution:	WB: 1:500~1:3000, ELISA: 1:1000
Reactivity:	Human, Mouse, Rat
Host:	Rabbit
Isotype:	IgG
Clonality:	Polyclonal
Immunogen:	The antiserum was produced against synthesized peptide derived from human NM23.
Formulation:	Phosphate buffered saline (without Mg <sup>2+</sup> and Ca <sup>2+</sup> ), pH 7.4, 150mM NaCl, 0.02% sodium azide and 50% glycerol.
Concentration:	lot specific
Purification:	The antibody was affinity-purified from rabbit antiserum by affinity-chromatography using epitope-specific immunogen.
Conjugation:	Unconjugated
Storage:	Store at -20°C as received.
Stability:	Stable for 12 months from date of receipt.
Gene Name:	NME/NM23 nucleoside diphosphate kinase 2
Database Link:	<a href="#">NP_001018149</a> <a href="#">Entrez Gene 18103 Mouse</a> <a href="#">Entrez Gene 83782 Rat</a> <a href="#">Entrez Gene 4831 Human</a> <a href="#">P22392</a>
Synonyms:	NDKB; NDPK-B; NDPKB; NM23-H2; NM23B; PUF
Note:	NM23 antibody detects endogenous levels of total NM23 protein.
Protein Families:	Druggable Genome, Transcription Factors
Protein Pathways:	Metabolic pathways, Purine metabolism, Pyrimidine metabolism



[View online »](#)

## Product images:



Western blot analysis of extracts from K562 cells, using NM23 Antibody (#TA313241). The lane on the right is treated with the synthesized peptide.