

Product datasheet for **TA313234**

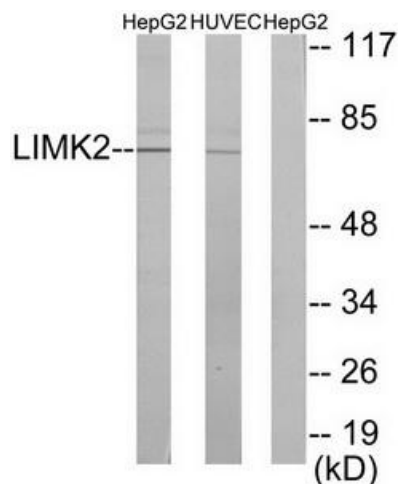
LIM kinase 2 (LIMK2) Rabbit Polyclonal Antibody

Product data:

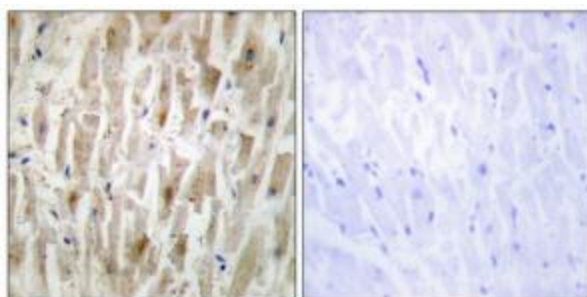
Product Type:	Primary Antibodies
Applications:	IF, IHC, WB
Recommended Dilution:	WB: 1:500~1:3000, IHC: 1:50~1:100, IF: 1:100~1:500, ELISA: 1:40000
Reactivity:	Human, Mouse, Rat
Host:	Rabbit
Isotype:	IgG
Clonality:	Polyclonal
Immunogen:	The antiserum was produced against synthesized peptide derived from internal of human LIMK2.
Formulation:	Phosphate buffered saline (without Mg ²⁺ and Ca ²⁺), pH 7.4, 150mM NaCl, 0.02% sodium azide and 50% glycerol.
Concentration:	lot specific
Purification:	The antibody was affinity-purified from rabbit antiserum by affinity-chromatography using epitope-specific immunogen.
Conjugation:	Unconjugated
Storage:	Store at -20°C as received.
Stability:	Stable for 12 months from date of receipt.
Gene Name:	LIM domain kinase 2
Database Link:	NP_001026971 Entrez Gene 16886 Mouse Entrez Gene 29524 Rat Entrez Gene 3985 Human P53671
Synonyms:	LIMK-2
Note:	LIMK2 antibody detects endogenous levels of total LIMK2 protein.
Protein Families:	Druggable Genome, Protein Kinase
Protein Pathways:	Axon guidance, Fc gamma R-mediated phagocytosis, Regulation of actin cytoskeleton



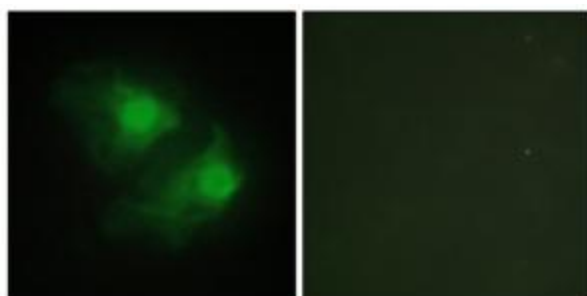
[View online »](#)

Product images:


Western blot analysis of extracts from HepG2 cells and HUVEC cells, using LIMK2 antibody. The lane on the right is treated with the synthesized peptide.



Immunohistochemistry analysis of paraffin-embedded human heart tissue using LIMK2 antibody. The picture on the right is treated with the synthesized peptide.



Immunofluorescence analysis of HeLa cells, using LIMK2 antibody. The picture on the right is treated with the synthesized peptide.