

## Product datasheet for **TA313233**

### LIM kinase 2 (LIMK2) Rabbit Polyclonal Antibody

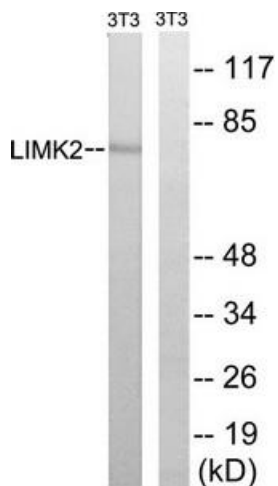
#### Product data:

Product Type:	Primary Antibodies
Applications:	WB
Recommended Dilution:	WB: 1:500~1:3000, ELISA: 1:5000
Reactivity:	Human, Mouse, Rat
Host:	Rabbit
Isotype:	IgG
Clonality:	Polyclonal
Immunogen:	The antiserum was produced against synthesized non-phosphopeptide derived from human LIMK2 around the phosphorylation site of serine 283 (R-R-SP-L-R).
Formulation:	Phosphate buffered saline (without Mg <sup>2+</sup> and Ca <sup>2+</sup> ), pH 7.4, 150mM NaCl, 0.02% sodium azide and 50% glycerol.
Concentration:	lot specific
Purification:	The antibody was affinity-purified from rabbit antiserum by affinity-chromatography using epitope-specific immunogen.
Conjugation:	Unconjugated
Storage:	Store at -20°C as received.
Stability:	Stable for 12 months from date of receipt.
Gene Name:	LIM domain kinase 2
Database Link:	<a href="#">NP_001026971</a> <a href="#">Entrez Gene 16886 Mouse</a> <a href="#">Entrez Gene 29524 Rat</a> <a href="#">Entrez Gene 3985 Human</a> <a href="#">P53671</a>
Synonyms:	LIMK-2
Note:	LIMK2 (Ab-283) antibody detects endogenous levels of total LIMK2 protein.
Protein Families:	Druggable Genome, Protein Kinase
Protein Pathways:	Axon guidance, Fc gamma R-mediated phagocytosis, Regulation of actin cytoskeleton

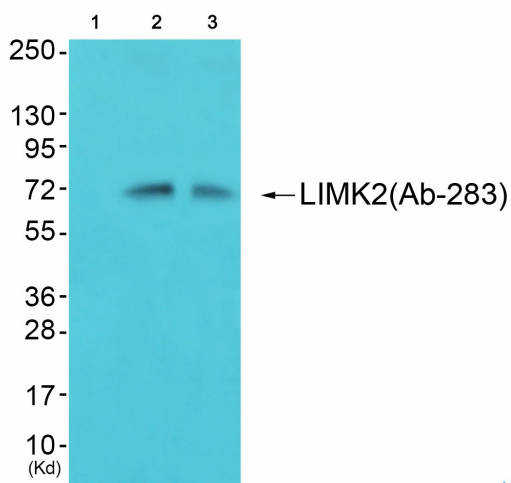


[View online »](#)

Product images:



Western blot analysis of extracts from 3T3 cells, treated with PMA (125ng/ml, 30mins), using LIMK2 (Ab-283) antibody. The lane on the right is treated with the synthesized peptide.



Western blot analysis of extracts from 293 cells (Lane 2) and cos-7 cells (Lane 3), using LIMK2 (Ab-283) Antibody. The lane on the left is treated with synthesized peptide.