

Product datasheet for **TA313227**

SIRP alpha (SIRPA) Rabbit Polyclonal Antibody

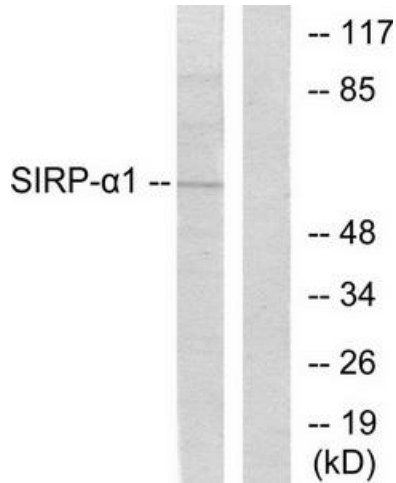
Product data:

Product Type:	Primary Antibodies
Applications:	IHC, WB
Recommended Dilution:	WB: 1:500~1:3000, IHC: 1:50~1:100, ELISA: 1:20000
Reactivity:	Human, Mouse, Rat
Host:	Rabbit
Isotype:	IgG
Clonality:	Polyclonal
Immunogen:	The antiserum was produced against synthesized peptide derived from human SIRP-alpha1.
Formulation:	Phosphate buffered saline (without Mg ²⁺ and Ca ²⁺), pH 7.4, 150mM NaCl, 0.02% sodium azide and 50% glycerol.
Concentration:	lot specific
Purification:	The antibody was affinity-purified from rabbit antiserum by affinity-chromatography using epitope-specific immunogen.
Conjugation:	Unconjugated
Storage:	Store at -20°C as received.
Stability:	Stable for 12 months from date of receipt.
Gene Name:	signal regulatory protein alpha
Database Link:	NP_001035111 Entrez Gene 19261 Mouse Entrez Gene 25528 Rat Entrez Gene 140885 Human P78324
Synonyms:	BIT; CD172A; MFR; MYD-1; P84; PTPNS1; SHPS1; SIRP
Note:	Sirp .1 antibody detects endogenous levels of total Sirp .1 protein.
Protein Families:	Druggable Genome, Phosphatase, Transmembrane

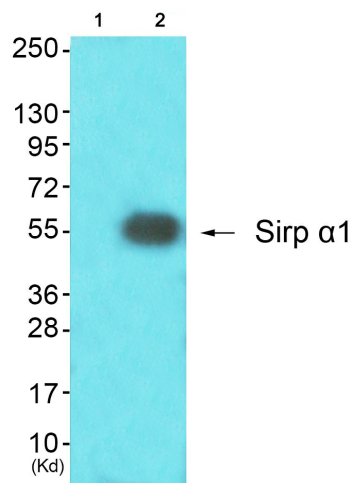


[View online »](#)

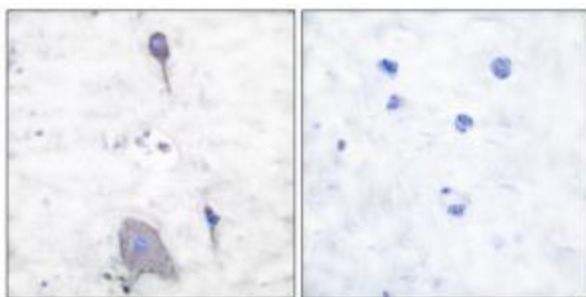
Product images:



Western blot analysis of extracts from HepG2 cells, using Sirp a1 antibody (#TA313227).The lane on the right is treated with the synthesized peptide.



Western blot analysis of extracts from colo cells (Lane 2), using Sirp a1 Antibody. The lane on the left is treated with synthesized peptide.



Immunohistochemical analysis of paraffin-embedded human brain tissue using Sirp a1 antibody (#TA313227).The picture on the right is treated with the synthesized peptide.