

Product datasheet for **TA313226**

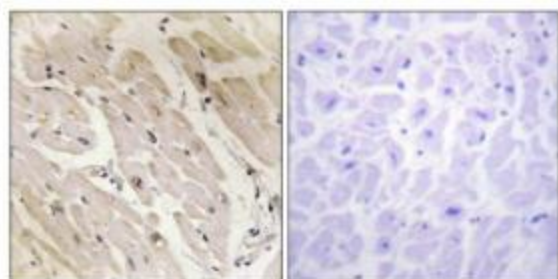
PRKAG2 Rabbit Polyclonal Antibody

Product data:

Product Type:	Primary Antibodies
Applications:	IF, IHC
Recommended Dilution:	IHC: 1:50~1:100, IF: 1:100~1:500, ELISA: 1:20000
Reactivity:	Human, Mouse
Host:	Rabbit
Isotype:	IgG
Clonality:	Polyclonal
Immunogen:	The antiserum was produced against synthesized peptide derived from internal of human PRKAG2.
Formulation:	Phosphate buffered saline (without Mg ²⁺ and Ca ²⁺), pH 7.4, 150mM NaCl, 0.02% sodium azide and 50% glycerol.
Concentration:	lot specific
Purification:	The antibody was affinity-purified from rabbit antiserum by affinity-chromatography using epitope-specific immunogen.
Conjugation:	Unconjugated
Storage:	Store at -20°C as received.
Stability:	Stable for 12 months from date of receipt.
Gene Name:	protein kinase AMP-activated non-catalytic subunit gamma 2
Database Link:	NP_077747 Entrez Gene 108099 Mouse Entrez Gene 51422 Human Q9UGJ0
Synonyms:	AAKG; AAKG2; CMH6; H91620p; WPWS
Note:	PRKAG2 antibody detects endogenous levels of total PRKAG2 protein.
Protein Families:	Druggable Genome
Protein Pathways:	Adipocytokine signaling pathway, Hypertrophic cardiomyopathy (HCM), Insulin signaling pathway

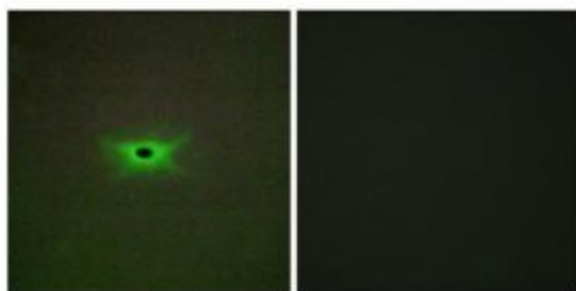


[View online »](#)

Product images:

Peptide - +

Immunohistochemistry analysis of paraffin-embedded human heart tissue, using PRKAG2 antibody. The picture on the right is treated with the synthesized peptide.



Peptide - +

Immunofluorescence analysis of A549 cells, using PRKAG2 antibody. The picture on the right is treated with the synthesized peptide.