

## Product datasheet for **TA313220**

### Insulin Receptor (INSR) Rabbit Polyclonal Antibody

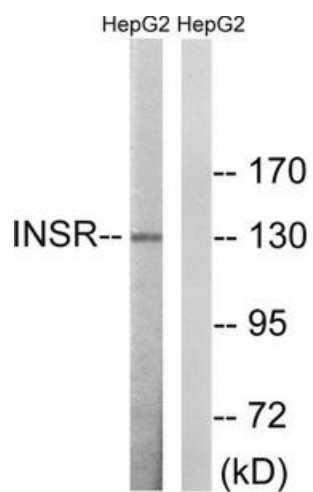
#### Product data:

Product Type:	Primary Antibodies
Applications:	WB
Recommended Dilution:	WB: 1:500~1:3000, ELISA: 1:5000
Reactivity:	Human, Mouse, Rat
Host:	Rabbit
Isotype:	IgG
Clonality:	Polyclonal
Immunogen:	The antiserum was produced against synthesized non-phosphopeptide derived from human Stathmin around the phosphorylation site of threonine 1375 (I-L-TP-L-P).
Formulation:	Phosphate buffered saline (without Mg <sup>2+</sup> and Ca <sup>2+</sup> ), pH 7.4, 150mM NaCl, 0.02% sodium azide and 50% glycerol.
Concentration:	lot specific
Purification:	The antibody was affinity-purified from rabbit antiserum by affinity-chromatography using epitope-specific immunogen.
Conjugation:	Unconjugated
Storage:	Store at -20°C as received.
Stability:	Stable for 12 months from date of receipt.
Gene Name:	insulin receptor
Database Link:	<a href="#">NP_001073285</a> <a href="#">Entrez Gene 16337 Mouse</a> <a href="#">Entrez Gene 24954 Rat</a> <a href="#">Entrez Gene 3643 Human</a> <a href="#">P06213</a>
Synonyms:	CD220; HHF5
Note:	INSR (Ab-1375) antibody detects endogenous levels of total INSR protein.
Protein Families:	Druggable Genome, Protein Kinase, Transmembrane
Protein Pathways:	Adherens junction, Insulin signaling pathway, Type II diabetes mellitus



[View online »](#)

## Product images:



Western blot analysis of extracts from HepG2 cells, using INSR (Ab-1375) antibody. The lane on the right is treated with the synthesized peptide.