

## Product datasheet for **TA313210**

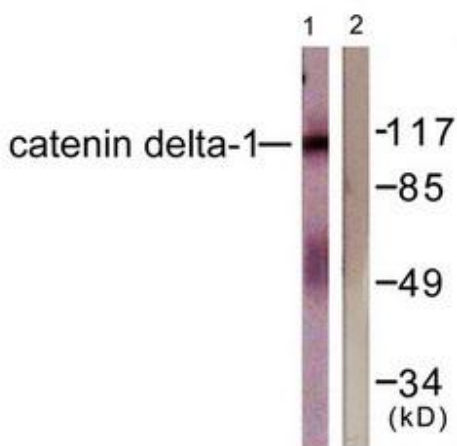
### CTNND1 Rabbit Polyclonal Antibody

#### Product data:

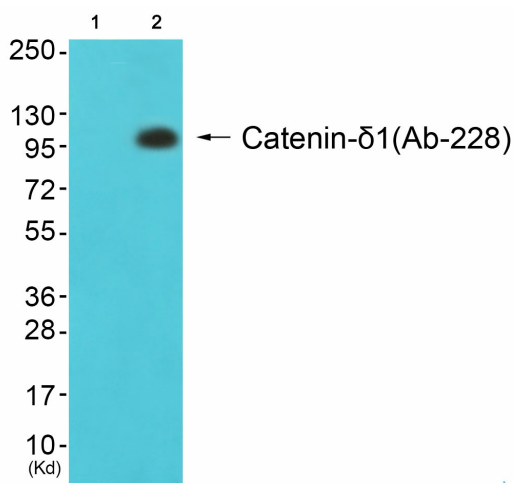
Product Type:	Primary Antibodies
Applications:	IHC, WB
Recommended Dilution:	WB: 1:500~1:3000, IHC: 1:50~1:100, ELISA: 1:1000
Reactivity:	Human, Mouse, Rat
Host:	Rabbit
Isotype:	IgG
Clonality:	Polyclonal
Immunogen:	The antiserum was produced against synthesized non-phosphopeptide derived from human Catenin-d1 around the phosphorylation site of tyrosine 228 (D-N-YP-G-S).
Formulation:	Phosphate buffered saline (without Mg <sup>2+</sup> and Ca <sup>2+</sup> ), pH 7.4, 150mM NaCl, 0.02% sodium azide and 50% glycerol.
Concentration:	lot specific
Purification:	The antibody was affinity-purified from rabbit antiserum by affinity-chromatography using epitope-specific immunogen.
Conjugation:	Unconjugated
Storage:	Store at -20°C as received.
Stability:	Stable for 12 months from date of receipt.
Gene Name:	catenin delta 1
Database Link:	<a href="#">NP_001078927</a> <a href="#">Entrez Gene 12388 Mouse</a> <a href="#">Entrez Gene 311163 Rat</a> <a href="#">Entrez Gene 1500 Human</a> <a href="#">O60716</a>
Synonyms:	CAS; CTNND; p120; p120(CAS); p120(CTN); P120CAS; P120CTN
Note:	Catenin-.1 (Ab-228) antibody detects endogenous levels of total Catenin-.1 protein.
Protein Families:	Druggable Genome
Protein Pathways:	Adherens junction, Leukocyte transendothelial migration



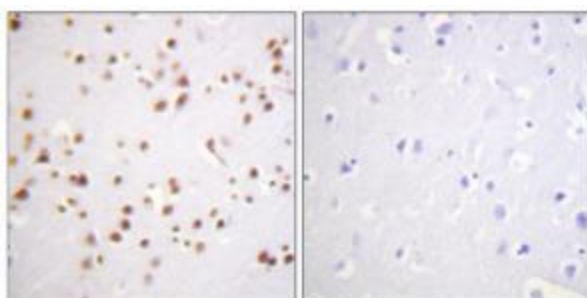
[View online »](#)

**Product images:**


Western blot analysis of extracts from HuvEc cells, using Catenin-d1 (Ab-228) antibody. The lane on the right is treated with the synthesized peptide.



Western blot analysis of extracts from 293 cells (Lane 2), using Catenin-d1 (Ab-228) Antibody. The lane on the left is treated with synthesized peptide.



Immunohistochemistry analysis of paraffin-embedded human brain tissue using Catenin-d1 (Ab-228) antibody. The picture on the right is treated with the synthesized peptide.