

Product datasheet for **TA313203**

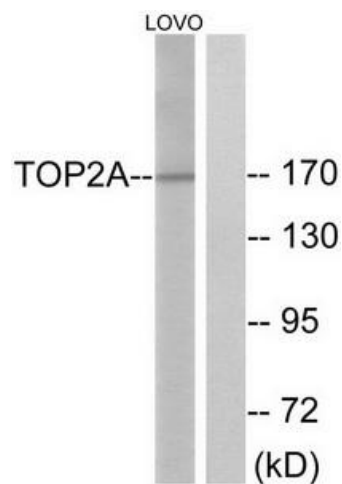
Topoisomerase II alpha (TOP2A) Rabbit Polyclonal Antibody

Product data:

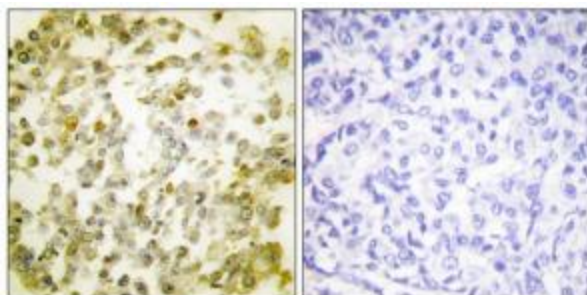
Product Type:	Primary Antibodies
Applications:	IHC, WB
Recommended Dilution:	WB: 1:500~1:3000, IHC: 1:50~1:100, ELISA: 1:1000
Reactivity:	Human, Mouse
Host:	Rabbit
Isotype:	IgG
Clonality:	Polyclonal
Immunogen:	The antiserum was produced against synthesized non-phosphopeptide derived from human TOP2A around the phosphorylation site of serine 1106 (E-E-SP-D-N).
Formulation:	Phosphate buffered saline (without Mg ²⁺ and Ca ²⁺), pH 7.4, 150mM NaCl, 0.02% sodium azide and 50% glycerol.
Concentration:	lot specific
Purification:	The antibody was affinity-purified from rabbit antiserum by affinity-chromatography using epitope-specific immunogen.
Conjugation:	Unconjugated
Storage:	Store at -20°C as received.
Stability:	Stable for 12 months from date of receipt.
Gene Name:	topoisomerase (DNA) II alpha
Database Link:	NP_001058 Entrez Gene 21973 Mouse Entrez Gene 7153 Human P11388
Synonyms:	TOP2; TP2A
Note:	TOP2A (Ab-1106) antibody detects endogenous levels of total TOP2A protein.
Protein Families:	Druggable Genome



[View online »](#)

Product images:

Western blot analysis of extracts from LOVO cells, using TOP2A (Ab-1106) antibody. The lane on the right is treated with the synthesized peptide.



Immunohistochemistry analysis of paraffin-embedded human breast carcinoma tissue using TOP2A (Ab-1106) antibody. The picture on the right is treated with the synthesized peptide.