

## Product datasheet for **TA313200**

### Topoisomerase II alpha (TOP2A) Rabbit Polyclonal Antibody

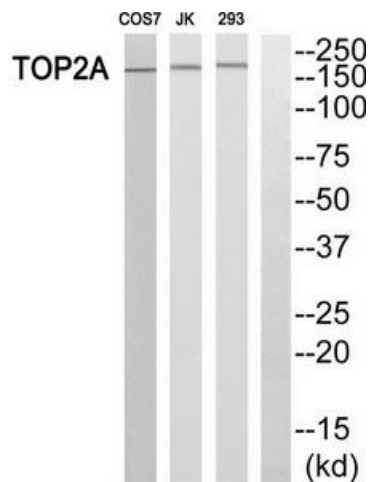
#### Product data:

Product Type:	Primary Antibodies
Applications:	IF, IHC, WB
Recommended Dilution:	WB: 1:500~1:3000, IHC: 1:50~1:100, IF: 1:100~1:500, ELISA: 1:20000
Reactivity:	Human
Host:	Rabbit
Isotype:	IgG
Clonality:	Polyclonal
Immunogen:	The antiserum was produced against synthesized peptide derived from N-terminal of human TOP2A.
Formulation:	Phosphate buffered saline (without Mg <sup>2+</sup> and Ca <sup>2+</sup> ), pH 7.4, 150mM NaCl, 0.02% sodium azide and 50% glycerol.
Concentration:	lot specific
Purification:	The antibody was affinity-purified from rabbit antiserum by affinity-chromatography using epitope-specific immunogen.
Conjugation:	Unconjugated
Storage:	Store at -20°C as received.
Stability:	Stable for 12 months from date of receipt.
Gene Name:	topoisomerase (DNA) II alpha
Database Link:	<a href="#">NP_001058</a> <a href="#">Entrez Gene 7153 Human</a> <a href="#">P11388</a>
Synonyms:	TOP2; TP2A
Note:	TOP2A antibody detects endogenous levels of total TOP2A protein.
Protein Families:	Druggable Genome

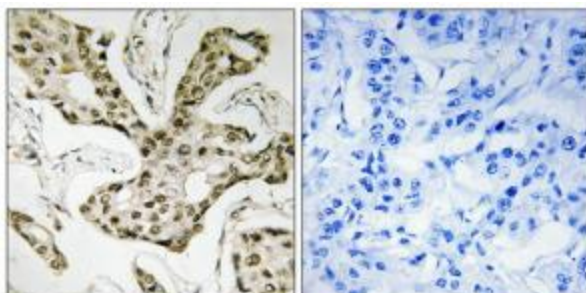


[View online »](#)

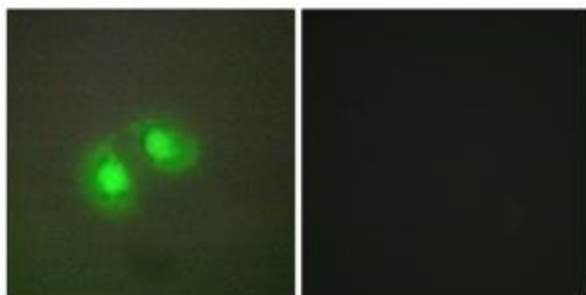
## Product images:



Western blot analysis of extracts from HT-29 cells, using TOP2A antibody. The lane on the right is treated with the synthesized peptide.



Immunohistochemistry analysis of paraffin-embedded human liver carcinoma tissue using TOP2A antibody. The picture on the right is treated with the synthesized peptide.



Immunofluorescence analysis of A549 cells, using TOP2A antibody. The picture on the right is treated with the synthesized peptide.