

Product datasheet for **TA313198**

Topoisomerase II alpha (TOP2A) Rabbit Polyclonal Antibody

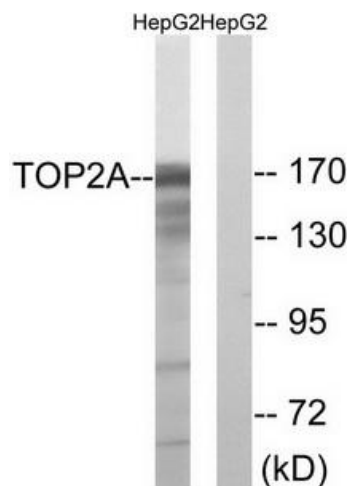
Product data:

Product Type:	Primary Antibodies
Applications:	WB
Recommended Dilution:	WB: 1:500~1:3000, ELISA: 1:20000
Reactivity:	Human
Host:	Rabbit
Isotype:	IgG
Clonality:	Polyclonal
Immunogen:	The antiserum was produced against synthesized non-phosphopeptide derived from human TOP2A around the phosphorylation site of threonine 1343 (E-K-TP-D-D).
Formulation:	Phosphate buffered saline (without Mg ²⁺ and Ca ²⁺), pH 7.4, 150mM NaCl, 0.02% sodium azide and 50% glycerol.
Concentration:	lot specific
Purification:	The antibody was affinity-purified from rabbit antiserum by affinity-chromatography using epitope-specific immunogen.
Conjugation:	Unconjugated
Storage:	Store at -20°C as received.
Stability:	Stable for 12 months from date of receipt.
Gene Name:	topoisomerase (DNA) II alpha
Database Link:	NP_001058 Entrez Gene 7153 Human P11388
Synonyms:	TOP2; TP2A
Note:	TOP2A (Ab-1343) antibody detects endogenous levels of total TOP2A protein.
Protein Families:	Druggable Genome

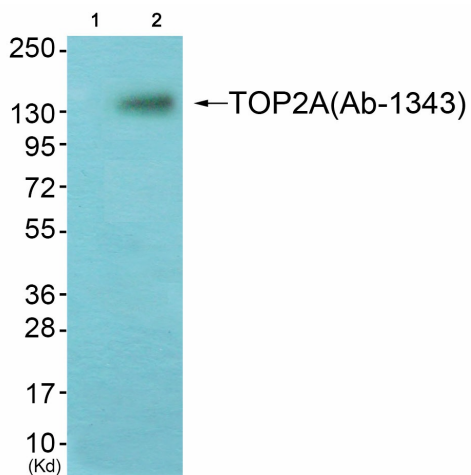


[View online »](#)

Product images:



Western blot analysis of extracts from HepG2 cells, using TOP2A (Ab-1343) antibody. The lane on the right is treated with the synthesized peptide.



Western blot analysis of extracts from K562 cells (Lane 2), using TOP2A (Ab-1343) Antibody. The lane on the left is treated with synthesized peptide.