

Product datasheet for **TA313195**

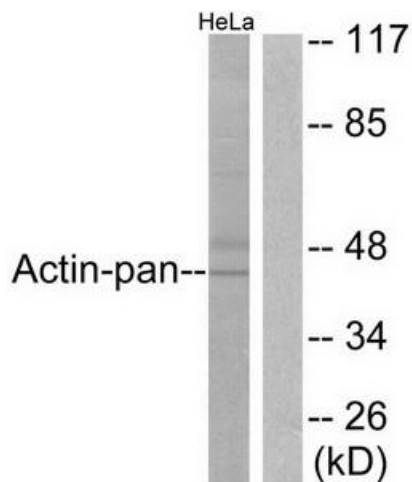
beta Actin (ACTB) Rabbit Polyclonal Antibody

Product data:

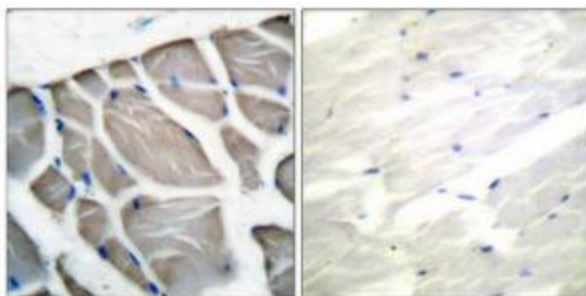
Product Type:	Primary Antibodies
Applications:	IHC, WB
Recommended Dilution:	WB: 1:500~1:3000, IHC: 1:50~1:100, ELISA: 1:10000
Reactivity:	Human, Mouse, Rat
Host:	Rabbit
Isotype:	IgG
Clonality:	Polyclonal
Immunogen:	The antiserum was produced against synthesized peptide derived from human Actin.
Formulation:	Phosphate buffered saline (without Mg ²⁺ and Ca ²⁺), pH 7.4, 150mM NaCl, 0.02% sodium azide and 50% glycerol.
Concentration:	lot specific
Purification:	The antibody was affinity-purified from rabbit antiserum by affinity-chromatography using epitope-specific immunogen.
Conjugation:	Unconjugated
Storage:	Store at -20°C as received.
Stability:	Stable for 12 months from date of receipt.
Gene Name:	actin, beta
Database Link:	NP_001092 Entrez Gene 11461 Mouse Entrez Gene 81822 Rat Entrez Gene 60 Human P60709
Synonyms:	BRWS1; PS1TP5BP1
Note:	Actin-pan antibody detects endogenous levels of total Actin protein.
Protein Families:	ES Cell Differentiation/IPS
Protein Pathways:	Adherens junction, Arrhythmogenic right ventricular cardiomyopathy (ARVC), Dilated cardiomyopathy, Focal adhesion, Hypertrophic cardiomyopathy (HCM), Leukocyte transendothelial migration, Pathogenic Escherichia coli infection, Regulation of actin cytoskeleton, Tight junction, Vibrio cholerae infection, Viral myocarditis



[View online »](#)

Product images:

Western blot analysis of extracts from HeLa cells, using Actin-pan antibody. The lane on the right is treated with the synthesized peptide.



Immunohistochemical analysis of paraffin-embedded human skeletal muscle tissue using Actin-pan antibody. The picture on the right is treated with the synthesized peptide.