

## Product datasheet for **TA313192**

### alpha Adducin (ADD1) Rabbit Polyclonal Antibody

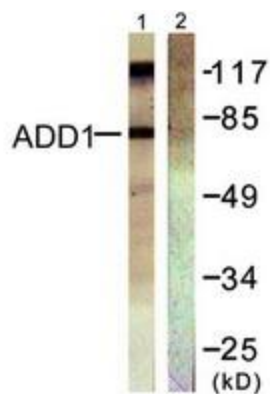
#### Product data:

Product Type:	Primary Antibodies
Applications:	IF, IHC, WB
Recommended Dilution:	WB: 1:500~1000, IHC: 1:50~100, IP: Various Dilution IF: 1:100~1:500, ELISA: 1:40000
Reactivity:	Human, Mouse, Rat
Host:	Rabbit
Isotype:	IgG
Clonality:	Polyclonal
Immunogen:	The antiserum was produced against synthesized non-phosphopeptide derived from human ADD1 around the phosphorylation site of serine 726 (T-P-SP-F-L).
Formulation:	Phosphate buffered saline (without Mg <sup>2+</sup> and Ca <sup>2+</sup> ), pH 7.4, 150mM NaCl, 0.02% sodium azide and 50% glycerol.
Concentration:	lot specific
Purification:	The antibody was affinity-purified from rabbit antiserum by affinity-chromatography using epitope-specific immunogen.
Conjugation:	Unconjugated
Storage:	Store at -20°C as received.
Stability:	Stable for 12 months from date of receipt.
Gene Name:	adducin 1
Database Link:	<a href="#">NP_001110</a> <a href="#">Entrez Gene 11518 Mouse</a> <a href="#">Entrez Gene 24170 Rat</a> <a href="#">Entrez Gene 118 Human</a> <a href="#">P35611</a>
Synonyms:	ADDA
Note:	ADD1 (Ab-726) antibody detects endogenous levels of total ADD1 protein.
Protein Families:	Druggable Genome

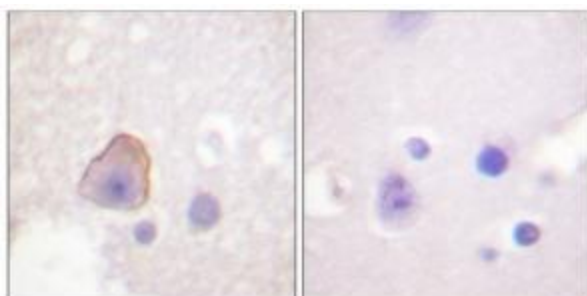


[View online »](#)

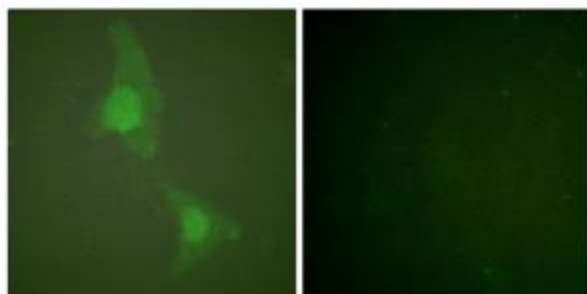
## Product images:



Western blot analysis of extracts from HeLa cells treated with Forskolin (40nM, 30min), using ADD1 (Ab-726) antibody (#TA313192, Line 1 and 2). The lane on the right is treated with the synthesized peptide.



Immunohistochemical analysis of paraffin-embedded human brain tissue using ADD1 (Ab-726) antibody (#TA313192). The picture on the right is treated with the synthesized peptide.



Immunofluorescence analysis of HeLa cells, using ADD1 (Ab-726) antibody (#TA313192). The picture on the right is treated with the synthesized peptide.