

Product datasheet for **TA313189**

CDC25B Rabbit Polyclonal Antibody

Product data:

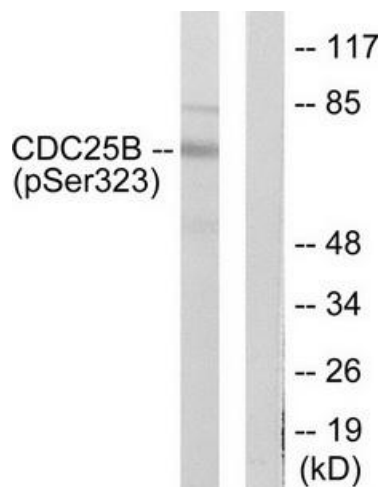
Product Type:	Primary Antibodies
Applications:	WB
Recommended Dilution:	WB: 1:500~1000, ELISA: 1:20000
Reactivity:	Human, Mouse, Rat
Modifications:	Phospho-specific
Host:	Rabbit
Isotype:	IgG
Clonality:	Polyclonal
Immunogen:	The antiserum was produced against synthesized phosphopeptide derived from human CDC25B around the phosphorylation site of serine 323 (S-P-SP-M-P).
Formulation:	Phosphate buffered saline (without Mg ²⁺ and Ca ²⁺), pH 7.4, 150mM NaCl, 0.02% sodium azide and 50% glycerol.
Concentration:	lot specific
Purification:	The antibody was affinity-purified from rabbit antiserum by affinity-chromatography using epitope-specific immunogen.
Conjugation:	Unconjugated
Storage:	Store at -20°C as received.
Stability:	Stable for 12 months from date of receipt.
Gene Name:	cell division cycle 25B
Database Link:	NP_004349 Entrez Gene 12531 Mouse Entrez Gene 171103 Rat Entrez Gene 994 Human P30305
Synonyms:	cell division cycle 25 homolog B (S. pombe); cell division cycle 25B; OTTHUMP00000030137; OTTHUMP00000030138; OTTHUMP00000030139
Note:	CDC25B (Phospho-Ser323) antibody detects endogenous levels of CDC25B only when phosphorylated at serine 323.
Protein Families:	Druggable Genome, Phosphatase



[View online »](#)

Protein Pathways: Cell cycle, MAPK signaling pathway, Progesterone-mediated oocyte maturation

Product images:



Western blot analysis of extracts from NIH/3T3 cells treated with PMA (125ng/ml, 30mins), using CDC25B (Phospho-Ser323) antibody (#TA313189). The lane on the right is treated with the synthesized peptide.