

Product datasheet for **TA313183**

Cyclin H (CCNH) Rabbit Polyclonal Antibody

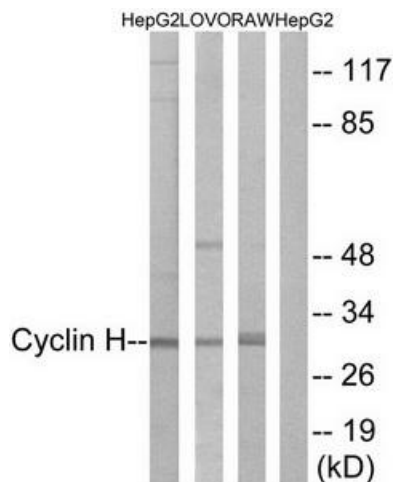
Product data:

Product Type:	Primary Antibodies
Applications:	IF, IHC, WB
Recommended Dilution:	WB: 1:500~1:3000, IHC: 1:50~1:100, IF: 1:100~1:500, ELISA: 1:20000
Reactivity:	Human, Mouse
Host:	Rabbit
Isotype:	IgG
Clonality:	Polyclonal
Immunogen:	The antiserum was produced against synthesized non-phosphopeptide derived from human Cyclin H around the phosphorylation site of threonine 315 (E-W-TP-D-D).
Formulation:	Phosphate buffered saline (without Mg ²⁺ and Ca ²⁺), pH 7.4, 150mM NaCl, 0.02% sodium azide and 50% glycerol.
Concentration:	lot specific
Purification:	The antibody was affinity-purified from rabbit antiserum by affinity-chromatography using epitope-specific immunogen.
Conjugation:	Unconjugated
Storage:	Store at -20°C as received.
Stability:	Stable for 12 months from date of receipt.
Gene Name:	cyclin H
Database Link:	NP_001230 Entrez Gene 66671 Mouse Entrez Gene 902 Human P51946
Synonyms:	CAK; Cych; p34; p37
Note:	Cyclin H (Ab-315) antibody detects endogenous levels of total Cyclin H protein.
Protein Families:	Druggable Genome, Transcription Factors
Protein Pathways:	Cell cycle, Nucleotide excision repair

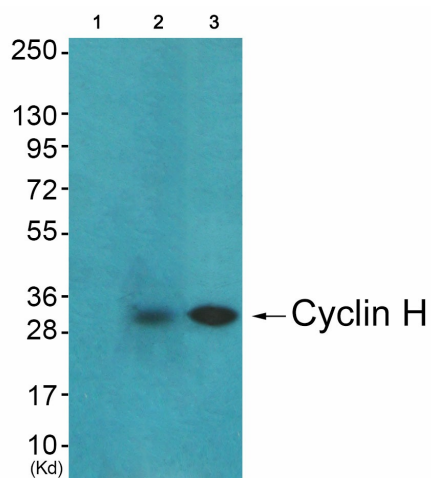


[View online »](#)

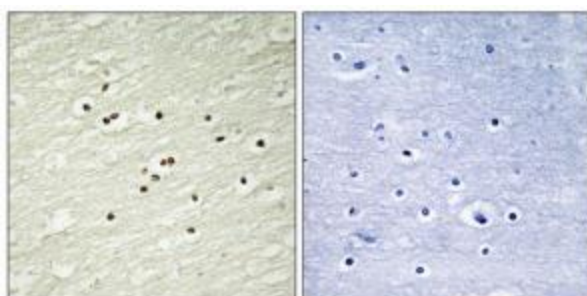
Product images:



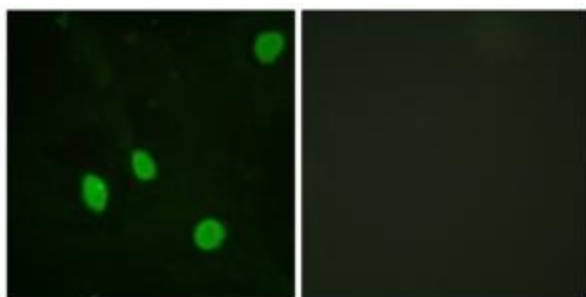
Western blot analysis of extracts from K562 cells, using Cyclin H (Ab-315) antibody. The lane on the right is treated with the synthesized peptide.



Western blot analysis of extracts from HuvEc cells (Lane 2) and JK cells (Lane 3), using Cyclin H (Ab-315) Antibody. The lane on the left is treated with synthesized peptide.



Immunohistochemistry analysis of paraffin-embedded human lung carcinoma tissue using Cyclin H (Ab-315) antibody. The picture on the right is treated with the synthesized peptide.



Immunofluorescence analysis of HeLa cells, using Cyclin H (Ab-315) antibody. The picture on the right is treated with the synthesized peptide.