

## Product datasheet for **TA313182**

### CBR3 Rabbit Polyclonal Antibody

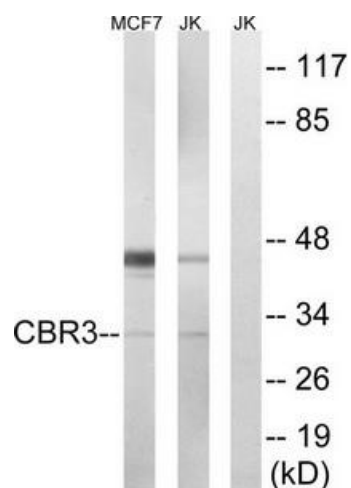
#### Product data:

Product Type:	Primary Antibodies
Applications:	IHC, WB
Recommended Dilution:	WB: 1:500~1:3000, IHC: 1:50~1:100, ELISA: 1:40000
Reactivity:	Human, Mouse, Rat
Host:	Rabbit
Isotype:	IgG
Clonality:	Polyclonal
Immunogen:	The antiserum was produced against synthesized peptide derived from internal of human CBR3.
Formulation:	Phosphate buffered saline (without Mg <sup>2+</sup> and Ca <sup>2+</sup> ), pH 7.4, 150mM NaCl, 0.02% sodium azide and 50% glycerol.
Concentration:	lot specific
Purification:	The antibody was affinity-purified from rabbit antiserum by affinity-chromatography using epitope-specific immunogen.
Conjugation:	Unconjugated
Storage:	Store at -20°C as received.
Stability:	Stable for 12 months from date of receipt.
Gene Name:	carbonyl reductase 3
Database Link:	<a href="#">NP_001227</a> <a href="#">Entrez Gene 109857 MouseEntrez Gene 304078 RatEntrez Gene 874 Human O75828</a>
Synonyms:	hCBR3; HEL-S-25; SDR21C2
Note:	CBR3 antibody detects endogenous levels of total CBR3 protein.
Protein Families:	Druggable Genome
Protein Pathways:	Arachidonic acid metabolism, Metabolic pathways

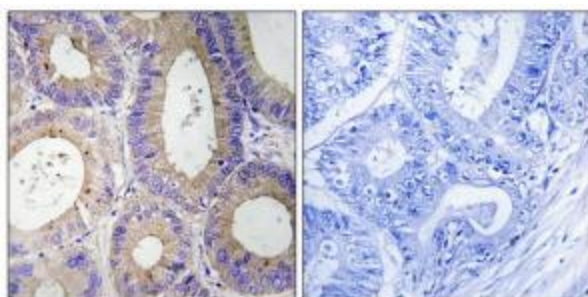


[View online »](#)

## Product images:



Western blot analysis of extracts from MCF7 cells and Jurkat cells, using CBR3 antibody. The lane on the right is treated with the synthesized peptide.



Immunohistochemistry analysis of paraffin-embedded human colon carcinoma tissue, using CBR3 antibody. Western blot analysis of extracts from MCF7 cells and Jurkat cells, using CBR3 antibody. The picture on the right is treated with the synthesized peptide.