

Product datasheet for **TA313181**

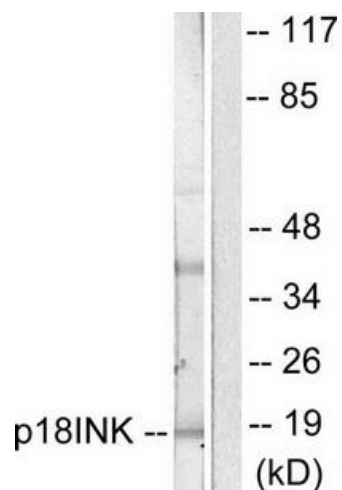
p18 INK4c (CDKN2C) Rabbit Polyclonal Antibody

Product data:

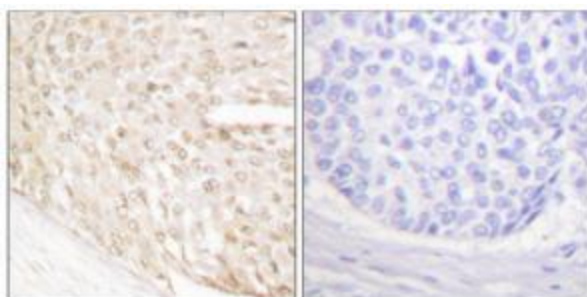
Product Type:	Primary Antibodies
Applications:	IHC, WB
Recommended Dilution:	WB: 1:500~1:3000, IHC: 1:50~1:100, ELISA: 1:5000
Reactivity:	Human, Mouse, Rat
Host:	Rabbit
Isotype:	IgG
Clonality:	Polyclonal
Immunogen:	The antiserum was produced against synthesized peptide derived from human p18 INK antibody.
Formulation:	Phosphate buffered saline (without Mg ²⁺ and Ca ²⁺), pH 7.4, 150mM NaCl, 0.02% sodium azide and 50% glycerol.
Concentration:	lot specific
Purification:	The antibody was affinity-purified from rabbit antiserum by affinity-chromatography using epitope-specific immunogen.
Conjugation:	Unconjugated
Storage:	Store at -20°C as received.
Stability:	Stable for 12 months from date of receipt.
Gene Name:	cyclin-dependent kinase inhibitor 2C
Database Link:	NP_001253 Entrez Gene 12580 MouseEntrez Gene 54238 RatEntrez Gene 1031 Human P42773
Synonyms:	INK4C; p18; p18-INK4C
Note:	p18 INK antibody detects endogenous levels of total p18 INK protein.
Protein Families:	Druggable Genome
Protein Pathways:	Cell cycle



[View online »](#)

Product images:

Western blot analysis of extracts from COS7 cells, using p18 INK antibody (#TA313181). The lane on the right is treated with the synthesized peptide.



Immunohistochemical analysis of paraffin-embedded human breast carcinoma tissue using p18 INK antibody (#TA313181). The picture on the right is treated with the synthesized peptide.