

Product datasheet for **TA313176**

DOK1 Rabbit Polyclonal Antibody

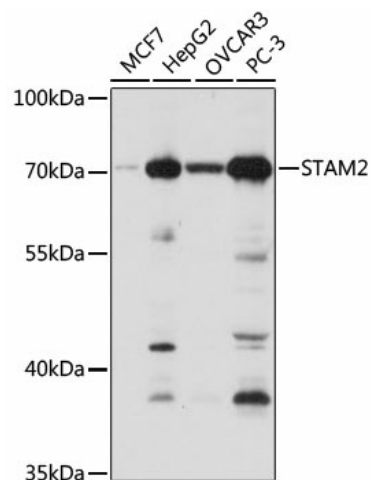
Product data:

| | |
|------------------------------|------------------------------------------------------------------------------------------------------------------------------------------------------------------------------|
| Product Type: | Primary Antibodies |
| Applications: | WB |
| Recommended Dilution: | WB: 1:500~1:3000, ELISA: 1:20000 |
| Reactivity: | Human, Mouse, Rat |
| Modifications: | Phospho-specific |
| Host: | Rabbit |
| Isotype: | IgG |
| Clonality: | Polyclonal |
| Immunogen: | The antiserum was produced against synthesized phosphopeptide derived from human p62Dok around the phosphorylation site of tyrosine 398 (E-G-YP-E-L). |
| Formulation: | Phosphate buffered saline (without Mg ²⁺ and Ca ²⁺), pH 7.4, 150mM NaCl, 0.02% sodium azide and 50% glycerol. |
| Concentration: | lot specific |
| Purification: | The antibody was affinity-purified from rabbit antiserum by affinity-chromatography using epitope-specific immunogen. |
| Conjugation: | Unconjugated |
| Storage: | Store at -20°C as received. |
| Stability: | Stable for 12 months from date of receipt. |
| Gene Name: | docking protein 1 |
| Database Link: | NP_001372 Entrez Gene 13448 Mouse Entrez Gene 312477 Rat Entrez Gene 1796 Human Q99704 |
| Synonyms: | P62DOK |
| Note: | p62Dok (Phospho-Tyr398) antibody detects endogenous levels of p62Dok only when phosphorylated at tyrosine 398. |
| Protein Families: | Druggable Genome |

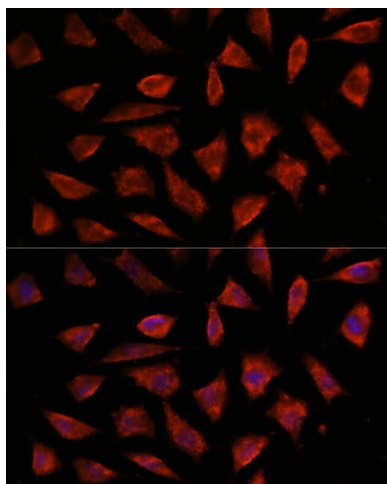


[View online »](#)

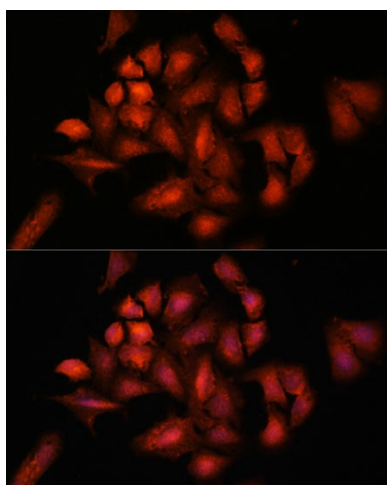
Product images:



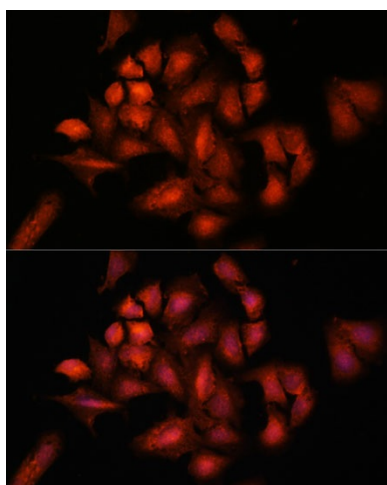
Western blot analysis of various lysates using STAM2 Rabbit pAb (TA313176) at 1:1000 dilution. Secondary antibody: HRP-conjugated Goat anti-Rabbit IgG (H+L) (AS014) at 1:10000 dilution. Lysates/proteins: 25µg per lane. Blocking buffer: 3% nonfat dry milk in TBST. Detection: ECL Basic Kit (RM00020). Exposure time: 1s.



Immunofluorescence analysis of C6 cells using STAM2 Rabbit pAb (TA313176) at dilution of 1:100. Secondary antibody: Cy3-conjugated Goat anti-Rabbit IgG (H+L) (AS007) at 1:500 dilution. Blue: DAPI for nuclear staining.



Immunofluorescence analysis of L929 cells using STAM2 Rabbit pAb (TA313176) at dilution of 1:100. Secondary antibody: Cy3-conjugated Goat anti-Rabbit IgG (H+L) (AS007) at 1:500 dilution. Blue: DAPI for nuclear staining.



Immunofluorescence analysis of U-2 OS cells using STAM2 Rabbit pAb (TA313176) at dilution of 1:100. Secondary antibody: Cy3-conjugated Goat anti-Rabbit IgG (H+L) (AS007) at 1:500 dilution. Blue: DAPI for nuclear staining.