

## Product datasheet for **TA313175**

### **DOK1 Rabbit Polyclonal Antibody**

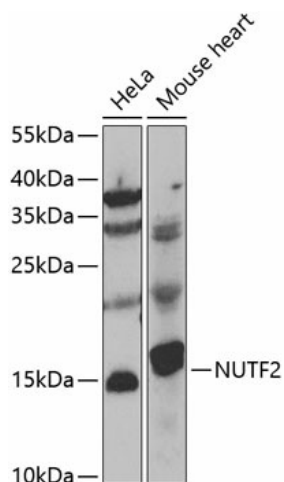
#### **Product data:**

<b>Product Type:</b>	Primary Antibodies
<b>Applications:</b>	WB
<b>Recommended Dilution:</b>	WB: 1:500~1:3000, ELISA: 1:10000
<b>Reactivity:</b>	Human, Mouse, Rat
<b>Modifications:</b>	Phospho-specific
<b>Host:</b>	Rabbit
<b>Isotype:</b>	IgG
<b>Clonality:</b>	Polyclonal
<b>Immunogen:</b>	The antiserum was produced against synthesized phosphopeptide derived from human p62Dok around the phosphorylation site of tyrosine 362 (P-I-YP-D-E).
<b>Formulation:</b>	Phosphate buffered saline (without Mg <sup>2+</sup> and Ca <sup>2+</sup> ), pH 7.4, 150mM NaCl, 0.02% sodium azide and 50% glycerol.
<b>Concentration:</b>	lot specific
<b>Purification:</b>	The antibody was affinity-purified from rabbit antiserum by affinity-chromatography using epitope-specific immunogen.
<b>Conjugation:</b>	Unconjugated
<b>Storage:</b>	Store at -20°C as received.
<b>Stability:</b>	Stable for 12 months from date of receipt.
<b>Gene Name:</b>	docking protein 1
<b>Database Link:</b>	<a href="#">NP_001372</a> <a href="#">Entrez Gene 13448 Mouse</a> <a href="#">Entrez Gene 312477 Rat</a> <a href="#">Entrez Gene 1796 Human</a> <a href="#">Q99704</a>
<b>Synonyms:</b>	P62DOK
<b>Note:</b>	p62Dok (Phospho-Tyr362) antibody detects endogenous levels of p62Dok only when phosphorylated at tyrosine 362.
<b>Protein Families:</b>	Druggable Genome



[View online »](#)

## Product images:



Western blot analysis of various lysates using NUTF2 Rabbit pAb (TA313175) at 1:1000 dilution. Secondary antibody: HRP-conjugated Goat anti-Rabbit IgG (H+L) (AS014) at 1:10000 dilution. Lysates/proteins: 25µg per lane. Blocking buffer: 3% nonfat dry milk in TBST. Detection: ECL Basic Kit (RM00020). Exposure time: 90s.