

Product datasheet for **TA313174**

EIF4B Rabbit Polyclonal Antibody

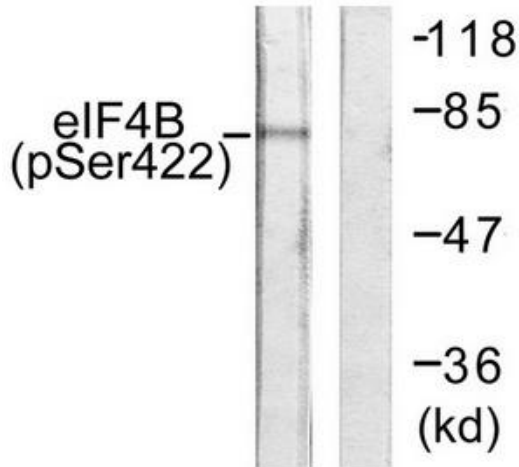
Product data:

Product Type:	Primary Antibodies
Applications:	IF, IHC, WB
Recommended Dilution:	WB: 1:500~1:3000, IHC: 1:50~1:100, IF: 1:100~1:500, ELISA: 1:40000
Reactivity:	Human, Mouse, Rat
Modifications:	Phospho-specific
Host:	Rabbit
Isotype:	IgG
Clonality:	Polyclonal
Immunogen:	The antiserum was produced against synthesized phosphopeptide derived from human eIF4B around the phosphorylation site of serine 422 (T-G-SP-E-S).
Formulation:	Phosphate buffered saline (without Mg ²⁺ and Ca ²⁺), pH 7.4, 150mM NaCl, 0.02% sodium azide and 50% glycerol.
Concentration:	lot specific
Purification:	The antibody was affinity-purified from rabbit antiserum by affinity-chromatography using epitope-specific immunogen.
Conjugation:	Unconjugated
Storage:	Store at -20°C as received.
Stability:	Stable for 12 months from date of receipt.
Gene Name:	eukaryotic translation initiation factor 4B
Database Link:	NP_060977 Entrez Gene 55378 Human Entrez Gene 1975 Human P23588
Synonyms:	EIF-4B; PRO1843
Note:	eIF4B (Phospho-Ser422) antibody detects endogenous levels of eIF4B only when phosphorylated at serine 422.

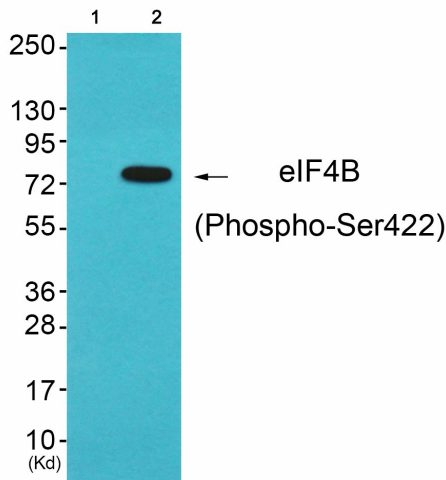


[View online »](#)

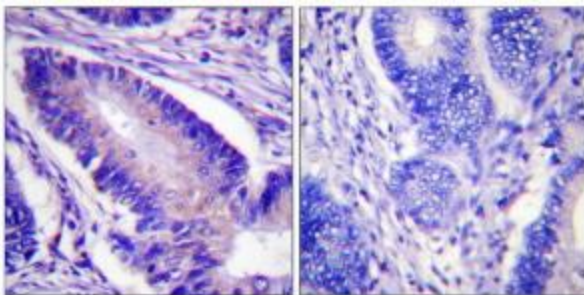
Product images:



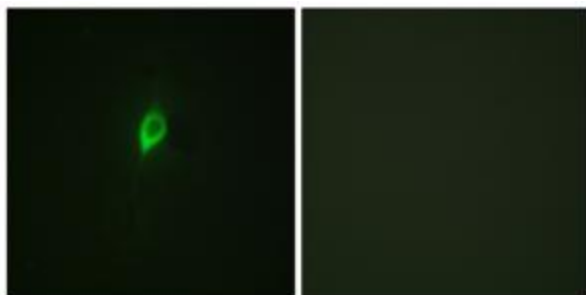
Western blot analysis of extracts from NIH/3T3 cells, using eIF4B (Phospho-Ser422) antibody. The lane on the right is treated with the synthesized peptide.



Western blot analysis of extracts from 3T3 cells (Lane 2), using eIF4B (Phospho-Ser422) Antibody. The lane on the left is treated with synthesized peptide.



Immunohistochemistry analysis of paraffin-embedded human colon carcinoma tissue, using eIF4B (Phospho-Ser422) antibody. The picture on the right is treated with the synthesized peptide.



Immunofluorescence analysis of NIH/3T3 cells, using eIF4B (Phospho-Ser422) antibody. The picture on the right is treated with the synthesized peptide.