

Product datasheet for **TA313172**

Flt3 ligand (FLT3LG) Rabbit Polyclonal Antibody

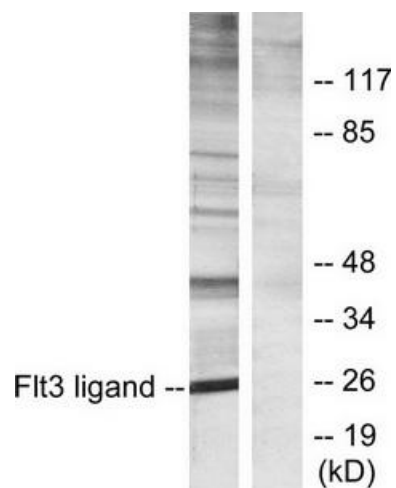
Product data:

Product Type:	Primary Antibodies
Applications:	WB
Recommended Dilution:	WB: 1:500~1:3000, ELISA: 1:20000
Reactivity:	Human
Host:	Rabbit
Isotype:	IgG
Clonality:	Polyclonal
Immunogen:	The antiserum was produced against synthesized peptide derived from internal of human Flt3 ligand.
Formulation:	Phosphate buffered saline (without Mg ²⁺ and Ca ²⁺), pH 7.4, 150mM NaCl, 0.02% sodium azide and 50% glycerol.
Concentration:	lot specific
Purification:	The antibody was affinity-purified from rabbit antiserum by affinity-chromatography using epitope-specific immunogen.
Conjugation:	Unconjugated
Storage:	Store at -20°C as received.
Stability:	Stable for 12 months from date of receipt.
Gene Name:	fms related tyrosine kinase 3 ligand
Database Link:	NP_001450 Entrez Gene 2323 Human P49771
Synonyms:	FL; FLT3L
Note:	Flt3 ligand antibody detects endogenous levels of total Flt3 ligand protein.
Protein Families:	Druggable Genome, ES Cell Differentiation/IPS, Secreted Protein, Transmembrane
Protein Pathways:	Cytokine-cytokine receptor interaction, Hematopoietic cell lineage, Pathways in cancer



[View online »](#)

Product images:



Western blot analysis of extracts from Jurkat cells, using Flt3 ligand antibody. The lane on the right is treated with the synthesized peptide.