

## Product datasheet for **TA313167**

### HSPB2 Rabbit Polyclonal Antibody

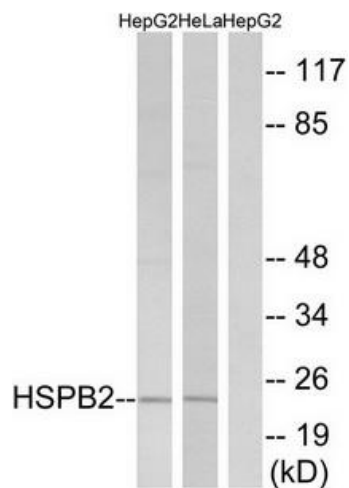
#### Product data:

Product Type:	Primary Antibodies
Applications:	IF, WB
Recommended Dilution:	WB: 1:500~1:3000, IF: 1:100~1:500, ELISA: 1:40000
Reactivity:	Human, Mouse, Rat
Host:	Rabbit
Isotype:	IgG
Clonality:	Polyclonal
Immunogen:	The antiserum was produced against synthesized peptide derived from internal of human HSPB2.
Formulation:	Phosphate buffered saline (without Mg <sup>2+</sup> and Ca <sup>2+</sup> ), pH 7.4, 150mM NaCl, 0.02% sodium azide and 50% glycerol.
Concentration:	lot specific
Purification:	The antibody was affinity-purified from rabbit antiserum by affinity-chromatography using epitope-specific immunogen.
Conjugation:	Unconjugated
Storage:	Store at -20°C as received.
Stability:	Stable for 12 months from date of receipt.
Gene Name:	heat shock protein family B (small) member 2
Database Link:	<a href="#">NP_001532</a> <a href="#">Entrez Gene 69253 MouseEntrez Gene 161476 RatEntrez Gene 3316 Human Q16082</a>
Synonyms:	Hs.78846; HSP27; LOH11CR1K; MKBP
Note:	HSPB2 antibody detects endogenous levels of total HSPB2 protein.

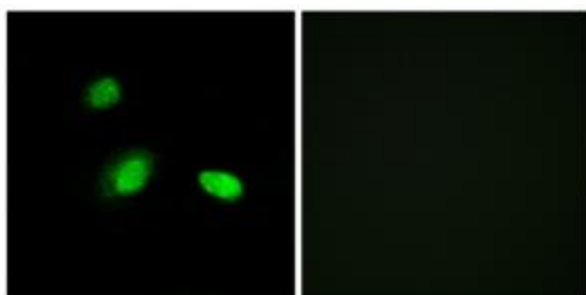


[View online »](#)

Product images:



Western blot analysis of extracts from HepG2 cells and HeLa cells, using HSPB2 antibody. The lane on the right is treated with the synthesized peptide.



Immunofluorescence analysis of A549 cells, using HSPB2 antibody. The picture on the right is treated with the synthesized peptide.