

Product datasheet for **TA313163**

Aryl hydrocarbon Receptor (AHR) Rabbit Polyclonal Antibody

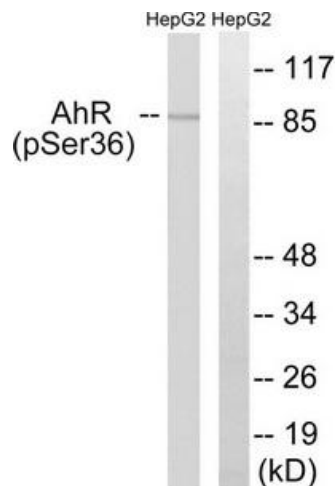
Product data:

Product Type:	Primary Antibodies
Applications:	IHC, WB
Recommended Dilution:	WB: 1:500~1:3000, IHC: 1:50~1:100, ELISA: 1:5000
Reactivity:	Human, Mouse, Rat
Modifications:	Phospho-specific
Host:	Rabbit
Isotype:	IgG
Clonality:	Polyclonal
Immunogen:	The antiserum was produced against synthesized phosphopeptide derived from human AhR around the phosphorylation site of serine 36 (N-P-SP-K-R).
Formulation:	Phosphate buffered saline (without Mg ²⁺ and Ca ²⁺), pH 7.4, 150mM NaCl, 0.02% sodium azide and 50% glycerol.
Concentration:	lot specific
Purification:	The antibody was affinity-purified from rabbit antiserum by affinity-chromatography using epitope-specific immunogen.
Conjugation:	Unconjugated
Storage:	Store at -20°C as received.
Stability:	Stable for 12 months from date of receipt.
Gene Name:	aryl hydrocarbon receptor
Database Link:	NP_001612 Entrez Gene 11622 Mouse Entrez Gene 25690 Rat Entrez Gene 196 Human P35869
Synonyms:	bHLHe76
Note:	AhR (Phospho-Ser36) antibody detects endogenous levels of AhR only when phosphorylated at serine 36.
Protein Families:	Druggable Genome, Nuclear Hormone Receptor, Transcription Factors

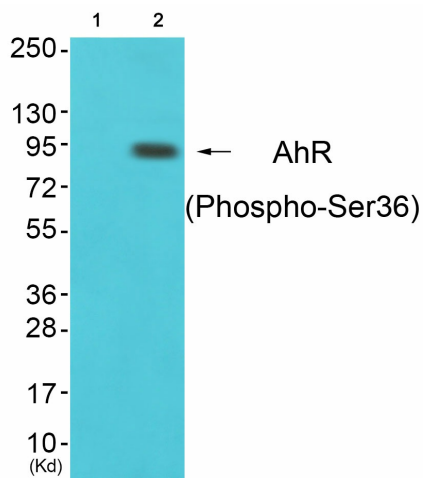


[View online »](#)

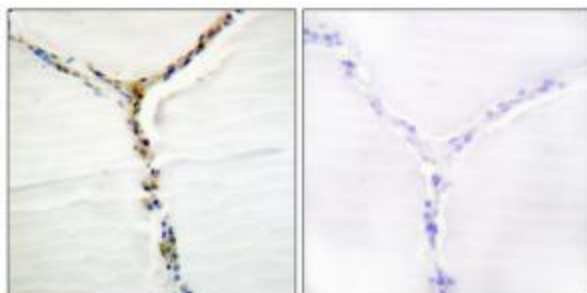
Product images:



Western blot analysis of extracts from HepG2 cells, using AhR (Phospho-Ser36) antibody. The lane on the right is treated with the synthesized peptide.



Western blot analysis of extracts from cos-7 cells (Lane 2), using AhR (Phospho-Ser36) Antibody. The lane on the left is treated with synthesized peptide.



Immunohistochemistry analysis of paraffin-embedded human thyroid gland tissue using AhR (Phospho-Ser36) antibody. The picture on the right is treated with the synthesized peptide.