

Product datasheet for **TA313161**

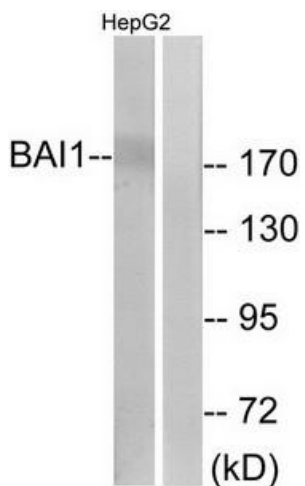
BAI1 (ADGRB1) Rabbit Polyclonal Antibody

Product data:

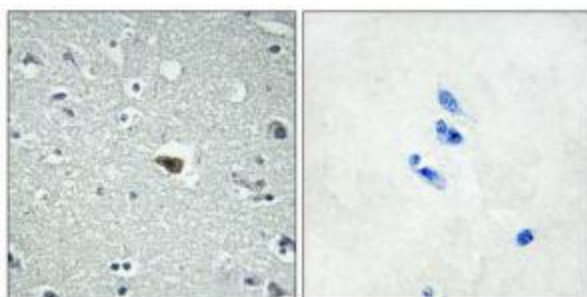
| | |
|------------------------------|---|
| Product Type: | Primary Antibodies |
| Applications: | IF, IHC, WB |
| Recommended Dilution: | WB: 1:500~1:3000, IHC: 1:50~1:100, IF: 1:100~1:500, ELISA: 1:10000 |
| Reactivity: | Human, Mouse |
| Host: | Rabbit |
| Isotype: | IgG |
| Clonality: | Polyclonal |
| Immunogen: | The antiserum was produced against synthesized peptide derived from internal of human BAI1. |
| Formulation: | Phosphate buffered saline (without Mg ²⁺ and Ca ²⁺), pH 7.4, 150mM NaCl, 0.02% sodium azide and 50% glycerol. |
| Concentration: | lot specific |
| Purification: | The antibody was affinity-purified from rabbit antiserum by affinity-chromatography using epitope-specific immunogen. |
| Conjugation: | Unconjugated |
| Storage: | Store at -20°C as received. |
| Stability: | Stable for 12 months from date of receipt. |
| Gene Name: | adhesion G protein-coupled receptor B1 |
| Database Link: | NP_001693 Entrez Gene 107831 Mouse Entrez Gene 575 Human O14514 |
| Synonyms: | BAI1; GDAIF |
| Note: | BAI1 antibody detects endogenous levels of total BAI1 protein. |
| Protein Families: | Druggable Genome, Transmembrane |
| Protein Pathways: | p53 signaling pathway |



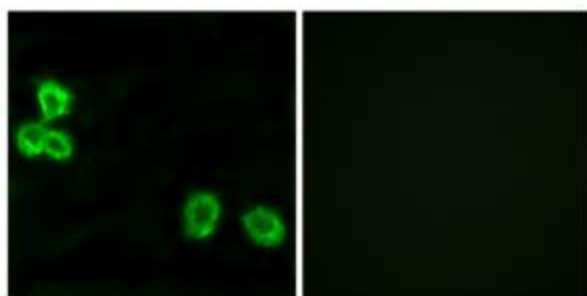
[View online »](#)

Product images:


Western blot analysis of extracts from Jurkat cells, using BAI1 antibody. The lane on the right is treated with the synthesized peptide.



Immunohistochemistry analysis of paraffin-embedded human brain tissue using BAI1 antibody. The picture on the right is treated with the synthesized peptide.



Immunofluorescence analysis of MCF-7 cells, using BAI1 antibody. The picture on the right is treated with the synthesized peptide.