

Product datasheet for **TA313154**

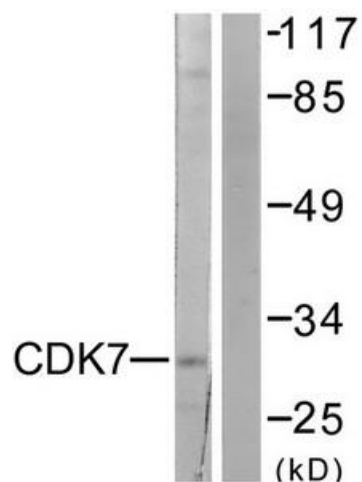
CDK7 Rabbit Polyclonal Antibody

Product data:

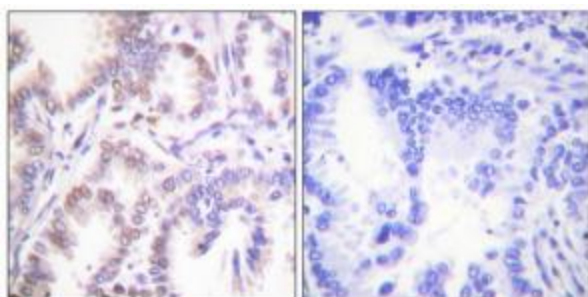
Product Type:	Primary Antibodies
Applications:	IHC, WB
Recommended Dilution:	WB: 1:500~1:3000, IHC: 1:50~1:100, ELISA: 1:20000
Reactivity:	Human, Mouse
Host:	Rabbit
Isotype:	IgG
Clonality:	Polyclonal
Immunogen:	The antiserum was produced against synthesized peptide derived from Internal of human CDK7.
Formulation:	Phosphate buffered saline (without Mg ²⁺ and Ca ²⁺), pH 7.4, 150mM NaCl, 0.02% sodium azide and 50% glycerol.
Concentration:	lot specific
Purification:	The antibody was affinity-purified from rabbit antiserum by affinity-chromatography using epitope-specific immunogen.
Conjugation:	Unconjugated
Storage:	Store at -20°C as received.
Stability:	Stable for 12 months from date of receipt.
Gene Name:	cyclin-dependent kinase 7
Database Link:	NP_001790 Entrez Gene 12572 Mouse Entrez Gene 1022 Human P50613
Synonyms:	CAK1; CDKN7; HCAK; MO15; p39MO15; STK1
Note:	CDK7 antibody detects endogenous levels of total CDK7 protein.
Protein Families:	Druggable Genome, Protein Kinase, Stem cell - Pluripotency, Transcription Factors
Protein Pathways:	Cell cycle, Nucleotide excision repair



[View online »](#)

Product images:

Western blot analysis of extracts from 293 cells, using CDK7 antibody. The lane on the right is treated with the synthesized peptide.



Immunohistochemistry analysis of paraffin-embedded human lung carcinoma tissue using CDK7 antibody. The picture on the right is treated with the synthesized peptide.