

Product datasheet for **TA313153**

CDK2 Rabbit Polyclonal Antibody

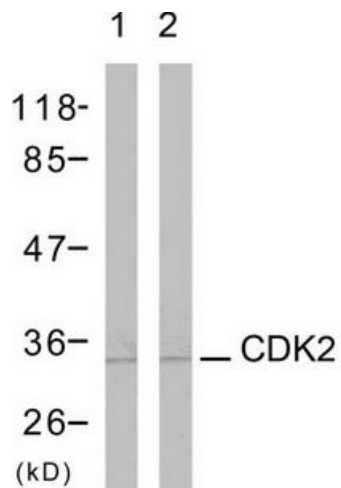
Product data:

| | |
|-----------------------|---------------------------------------------------------------------------------------------------------------------------------------------------------|
| Product Type: | Primary Antibodies |
| Applications: | WB |
| Recommended Dilution: | WB: 1:500~1:3000, ELISA: 1:10000 |
| Reactivity: | Human, Mouse, Rat |
| Host: | Rabbit |
| Isotype: | IgG |
| Clonality: | Polyclonal |
| Immunogen: | The antiserum was produced against synthesized non-phosphopeptide derived from human CDK2 around the phosphorylation site of Threonine160. |
| Formulation: | Phosphate buffered saline (without Mg ²⁺ and Ca ²⁺), pH 7.4, 150mM NaCl, 0.02% sodium azide and 50% glycerol. |
| Concentration: | lot specific |
| Purification: | The antibody was affinity-purified from rabbit antiserum by affinity-chromatography using epitope-specific immunogen. |
| Conjugation: | Unconjugated |
| Storage: | Store at -20°C as received. |
| Stability: | Stable for 12 months from date of receipt. |
| Gene Name: | cyclin-dependent kinase 2 |
| Database Link: | NP_001789 Entrez Gene 12566 MouseEntrez Gene 362817 RatEntrez Gene 1017 Human P24941 |
| Synonyms: | CDKN2; p33(CDK2) |
| Note: | CDK2 (Ab-160) Antibody detects endogenous levels of total CDK2 protein. |
| Protein Families: | Druggable Genome, Protein Kinase |
| Protein Pathways: | Cell cycle, Oocyte meiosis, p53 signaling pathway, Pathways in cancer, Progesterone-mediated oocyte maturation, Prostate cancer, Small cell lung cancer |



[View online »](#)

Product images:



Western blot analysis of extracts from A2780 cells, using CDK2 (Ab-160) Antibody. The lane on the right is treated with the synthesized peptide.