

Product datasheet for **TA313152**

CDK2 Rabbit Polyclonal Antibody

Product data:

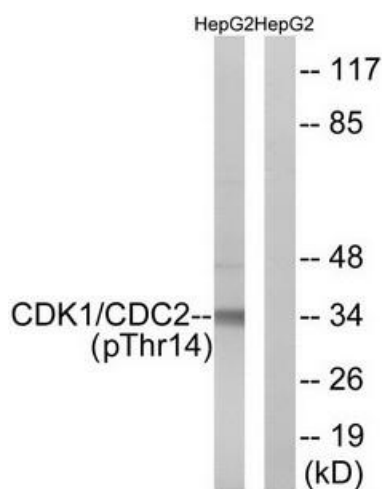
Product Type:	Primary Antibodies
Applications:	IF, WB
Recommended Dilution:	WB: 1:500~1:3000, IF: 1:100~1:500, ELISA: 1:1000
Reactivity:	Human, Mouse, Rat
Modifications:	Phospho-specific
Host:	Rabbit
Isotype:	IgG
Clonality:	Polyclonal
Immunogen:	The antiserum was produced against synthesized phosphopeptide derived from human CDK1/CDC2 around the phosphorylation site of threonine 14 (E-G-TP-Y-G).
Formulation:	Phosphate buffered saline (without Mg ²⁺ and Ca ²⁺), pH 7.4, 150mM NaCl, 0.02% sodium azide and 50% glycerol.
Concentration:	lot specific
Purification:	The antibody was affinity-purified from rabbit antiserum by affinity-chromatography using epitope-specific immunogen.
Conjugation:	Unconjugated
Storage:	Store at -20°C as received.
Stability:	Stable for 12 months from date of receipt.
Gene Name:	cyclin-dependent kinase 2
Database Link:	NP_001789 Entrez Gene 12566 Mouse Entrez Gene 362817 Rat Entrez Gene 1017 Human P24941
Synonyms:	CDKN2; p33(CDK2)
Note:	CDK1/CDC2 (Phospho-Thr14) antibody detects endogenous levels of CDK1/CDC2 only when phosphorylated at threonine 14.
Protein Families:	Druggable Genome, Protein Kinase



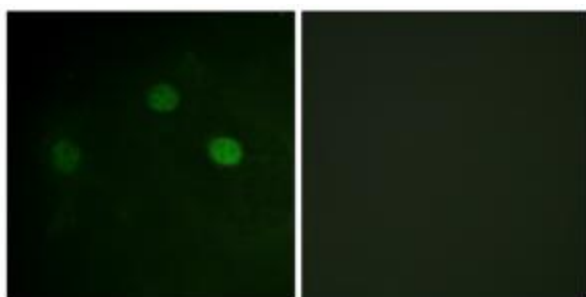
[View online »](#)

Protein Pathways: Cell cycle, Oocyte meiosis, p53 signaling pathway, Pathways in cancer, Progesterone-mediated oocyte maturation, Prostate cancer, Small cell lung cancer

Product images:



Western blot analysis of extracts from HepG2 cells, treated with Forskolin (40nM, 30mins), using CDK1/CDC2 (Phospho-Thr14) antibody. The lane on the right is treated with the synthesized peptide.



Immunofluorescence analysis of COS7 cells, using CDK1/CDC2 (Phospho-Thr14) antibody. The picture on the right is treated with the synthesized peptide.