

Product datasheet for **TA313151**

CDK2 Rabbit Polyclonal Antibody

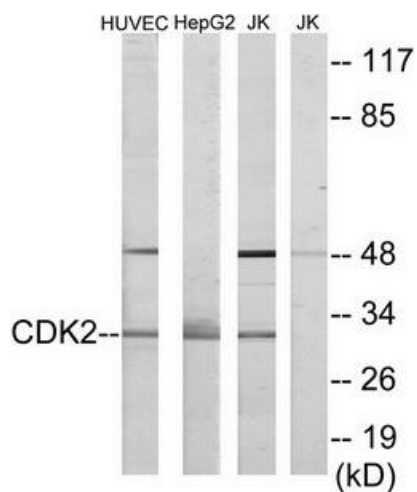
Product data:

| | |
|-----------------------|--|
| Product Type: | Primary Antibodies |
| Applications: | IF, WB |
| Recommended Dilution: | WB: 1:500~1:3000, IF: 1:100~1:500, ELISA: 1:20000 |
| Reactivity: | Human, Mouse, Rat |
| Host: | Rabbit |
| Isotype: | IgG |
| Clonality: | Polyclonal |
| Immunogen: | The antiserum was produced against synthesized peptide derived from internal of human CDK2. |
| Formulation: | Phosphate buffered saline (without Mg ²⁺ and Ca ²⁺), pH 7.4, 150mM NaCl, 0.02% sodium azide and 50% glycerol. |
| Concentration: | lot specific |
| Purification: | The antibody was affinity-purified from rabbit antiserum by affinity-chromatography using epitope-specific immunogen. |
| Conjugation: | Unconjugated |
| Storage: | Store at -20°C as received. |
| Stability: | Stable for 12 months from date of receipt. |
| Gene Name: | cyclin-dependent kinase 2 |
| Database Link: | NP_001789 Entrez Gene 12566 Mouse Entrez Gene 362817 Rat Entrez Gene 1017 Human P24941 |
| Synonyms: | CDKN2; p33(CDK2) |
| Note: | CDK2 antibody detects endogenous levels of total CDK2 protein. |
| Protein Families: | Druggable Genome, Protein Kinase |
| Protein Pathways: | Cell cycle, Oocyte meiosis, p53 signaling pathway, Pathways in cancer, Progesterone-mediated oocyte maturation, Prostate cancer, Small cell lung cancer |

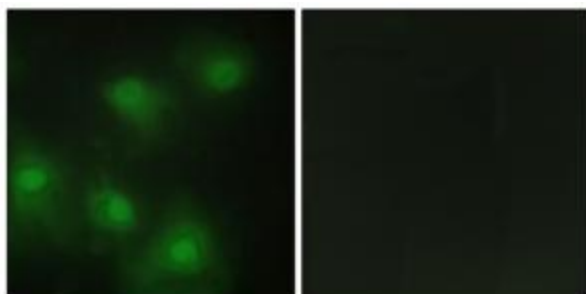


[View online »](#)

Product images:



Western blot analysis of extracts from HUVEC cells, HepG2 cells and Jurkat cells, using CDK2 antibody. The lane on the right is treated with the synthesized peptide.



Immunofluorescence analysis of HeLa cells, using CDK2 antibody. The picture on the right is treated with the synthesized peptide.