

Product datasheet for **TA313138**

beta Catenin (CTNNB1) Rabbit Polyclonal Antibody

Product data:

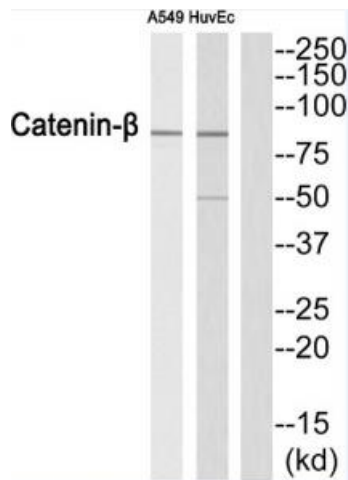
Product Type:	Primary Antibodies
Applications:	WB
Recommended Dilution:	WB: 1:500~1:3000, ELISA: 1:1000
Reactivity:	Human, Mouse, Rat
Host:	Rabbit
Isotype:	IgG
Clonality:	Polyclonal
Immunogen:	The antiserum was produced against synthesized peptide derived from Internalof human CTNNB1.
Formulation:	Phosphate buffered saline (without Mg ²⁺ and Ca ²⁺), pH 7.4, 150mM NaCl, 0.02% sodium azide and 50% glycerol.
Concentration:	lot specific
Purification:	The antibody was affinity-purified from rabbit antiserum by affinity-chromatography using epitope-specific immunogen.
Conjugation:	Unconjugated
Storage:	Store at -20°C as received.
Stability:	Stable for 12 months from date of receipt.
Gene Name:	catenin beta 1
Database Link:	NP_001895 Entrez Gene 12387 MouseEntrez Gene 84353 RatEntrez Gene 1499 Human P35222
Synonyms:	armadillo; CTNNB; MRD19
Note:	Catenin-. (Ab-552) Antibody detects endogenous levels of total CTNNB1protein.
Protein Families:	Druggable Genome, ES Cell Differentiation/IPS, Transcription Factors



[View online »](#)

Protein Pathways:

Adherens junction, Arrhythmogenic right ventricular cardiomyopathy (ARVC), Basal cell carcinoma, Colorectal cancer, Endometrial cancer, Focal adhesion, Leukocyte transendothelial migration, Melanogenesis, Pathogenic Escherichia coli infection, Pathways in cancer, Prostate cancer, Thyroid cancer, Tight junction, Wnt signaling pathway

Product images:

Western blot analysis of extracts from A549 cells and HuvEc cells, using Catenin-β (Ab-552) Antibody. The lane on the right is treated with the synthesized peptide.