

## Product datasheet for **TA313136**

### beta Catenin (CTNNB1) Rabbit Polyclonal Antibody

#### Product data:

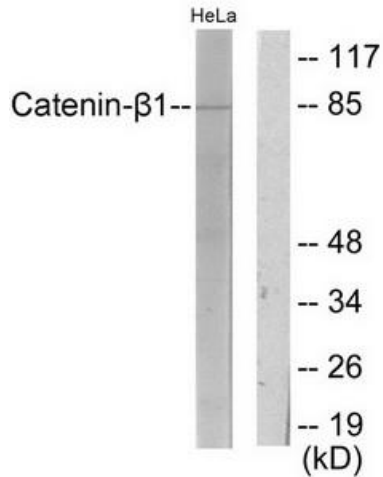
Product Type:	Primary Antibodies
Applications:	IHC, WB
Recommended Dilution:	WB: 1:500~1:3000, IHC: 1:50~1:100, ELISA: 1:10000
Reactivity:	Human, Mouse, Rat
Host:	Rabbit
Isotype:	IgG
Clonality:	Polyclonal
Immunogen:	The antiserum was produced against synthesized peptide derived from internal of human Catenin- $\beta$ 1.
Formulation:	Phosphate buffered saline (without Mg <sup>2+</sup> and Ca <sup>2+</sup> ), pH 7.4, 150mM NaCl, 0.02% sodium azide and 50% glycerol.
Concentration:	lot specific
Purification:	The antibody was affinity-purified from rabbit antiserum by affinity-chromatography using epitope-specific immunogen.
Conjugation:	Unconjugated
Storage:	Store at -20°C as received.
Stability:	Stable for 12 months from date of receipt.
Gene Name:	catenin beta 1
Database Link:	<a href="#">NP_001895</a> <a href="#">Entrez Gene 12387 Mouse</a> <a href="#">Entrez Gene 84353 Rat</a> <a href="#">Entrez Gene 1499 Human</a> <a href="#">P35222</a>
Synonyms:	armadillo; CTNNB; MRD19
Note:	Catenin-.1 antibody detects endogenous levels of total Catenin-.1 protein.
Protein Families:	Druggable Genome, ES Cell Differentiation/IPS, Transcription Factors



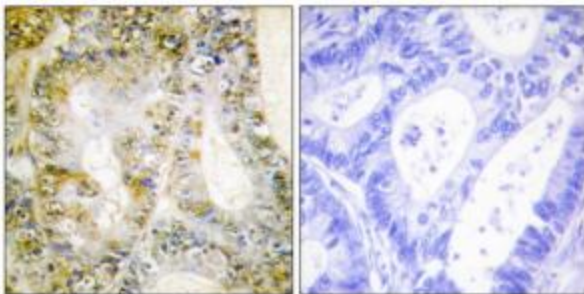
[View online »](#)

**Protein Pathways:**

Adherens junction, Arrhythmogenic right ventricular cardiomyopathy (ARVC), Basal cell carcinoma, Colorectal cancer, Endometrial cancer, Focal adhesion, Leukocyte transendothelial migration, Melanogenesis, Pathogenic Escherichia coli infection, Pathways in cancer, Prostate cancer, Thyroid cancer, Tight junction, Wnt signaling pathway

**Product images:**


Western blot analysis of extracts from HeLa cells, using Catenin-β1 antibody. The lane on the right is treated with the synthesized peptide.



Immunohistochemistry analysis of paraffin-embedded human colon carcinoma tissue using Catenin-β1 antibody. The picture on the right is treated with the synthesized peptide.