

## Product datasheet for **TA313132**

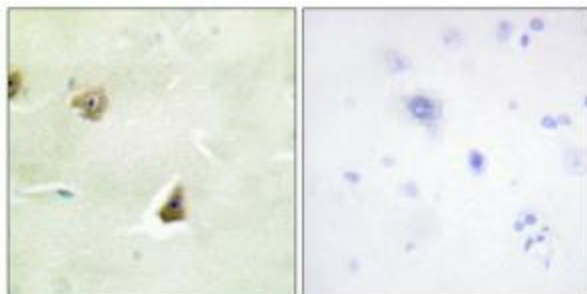
### DUSP6 Rabbit Polyclonal Antibody

#### Product data:

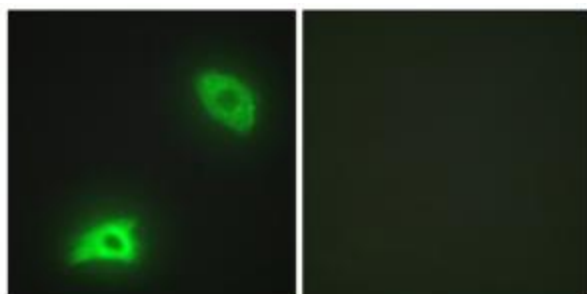
Product Type:	Primary Antibodies
Applications:	IF, IHC
Recommended Dilution:	IHC: 1:50~1:100, IF: 1:100~1:500, ELISA: 1:20000
Reactivity:	Human, Mouse, Rat
Host:	Rabbit
Isotype:	IgG
Clonality:	Polyclonal
Immunogen:	The antiserum was produced against synthesized peptide derived from internal of human DUSP6.
Formulation:	Phosphate buffered saline (without Mg <sup>2+</sup> and Ca <sup>2+</sup> ), pH 7.4, 150mM NaCl, 0.02% sodium azide and 50% glycerol.
Concentration:	lot specific
Purification:	The antibody was affinity-purified from rabbit antiserum by affinity-chromatography using epitope-specific immunogen.
Conjugation:	Unconjugated
Storage:	Store at -20°C as received.
Stability:	Stable for 12 months from date of receipt.
Gene Name:	dual specificity phosphatase 6
Database Link:	<a href="#">NP_001937</a> <a href="#">Entrez Gene 67603 Mouse</a> <a href="#">Entrez Gene 116663 Rat</a> <a href="#">Entrez Gene 1848 Human</a> <a href="#">Q16828</a>
Synonyms:	HH19; MKP3; PYST1
Note:	DUSP6 antibody detects endogenous levels of total DUSP6 protein.
Protein Families:	Druggable Genome, Phosphatase
Protein Pathways:	MAPK signaling pathway



[View online »](#)

**Product images:**

Immunohistochemistry analysis of paraffin-embedded human brain tissue, using DUSP6 antibody. The picture on the right is treated with the synthesized peptide.



Immunofluorescence analysis of HeLa cells, using DUSP6 antibody. The picture on the right is treated with the synthesized peptide.