

Product datasheet for **TA313129**

EPS15 Rabbit Polyclonal Antibody

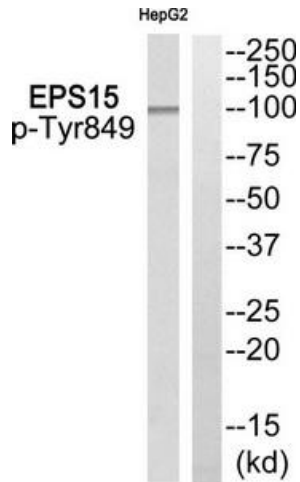
Product data:

Product Type:	Primary Antibodies
Applications:	WB
Recommended Dilution:	WB: 1:500~1:3000, ELISA: 1:5000
Reactivity:	Human, Mouse, Rat
Modifications:	Phospho-specific
Host:	Rabbit
Isotype:	IgG
Clonality:	Polyclonal
Immunogen:	The antiserum was produced against synthesized phosphopeptide derived from human EPS15 around the phosphorylation site of tyrosine 849.
Formulation:	Phosphate buffered saline (without Mg ²⁺ and Ca ²⁺), pH 7.4, 150mM NaCl, 0.02% sodium azide and 50% glycerol.
Concentration:	lot specific
Purification:	The antibody was affinity-purified from rabbit antiserum by affinity-chromatography using epitope-specific immunogen.
Conjugation:	Unconjugated
Storage:	Store at -20°C as received.
Stability:	Stable for 12 months from date of receipt.
Gene Name:	epidermal growth factor receptor pathway substrate 15
Database Link:	NP_001972 Entrez Gene 13858 Mouse Entrez Gene 313474 Rat Entrez Gene 2060 Human P42566
Synonyms:	AF-1P; AF1P; MLLT5
Note:	EPS15 (Phospho-Tyr849) antibody detects endogenous levels of EPS15 only when phosphorylated at tyrosine 849.
Protein Families:	Druggable Genome
Protein Pathways:	Endocytosis

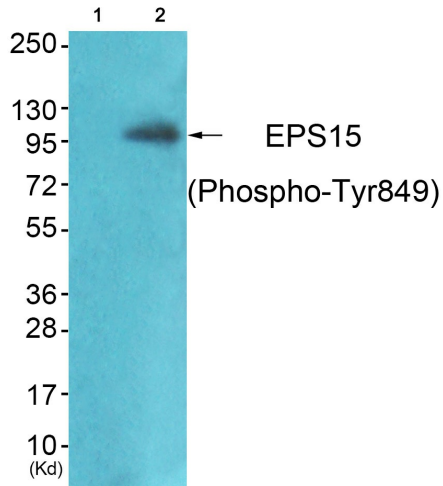


[View online »](#)

Product images:



Western blot analysis of extracts from HepG2 cells, using EPS15 (Phospho-Tyr849) antibody. The lane on the right is treated with the synthesized peptide.



Western blot analysis of extracts from JK cells (Lane 2), using EPS15 (Phospho-Tyr849) Antibody. The lane on the left is treated with synthesized peptide.