

Product datasheet for **TA313128**

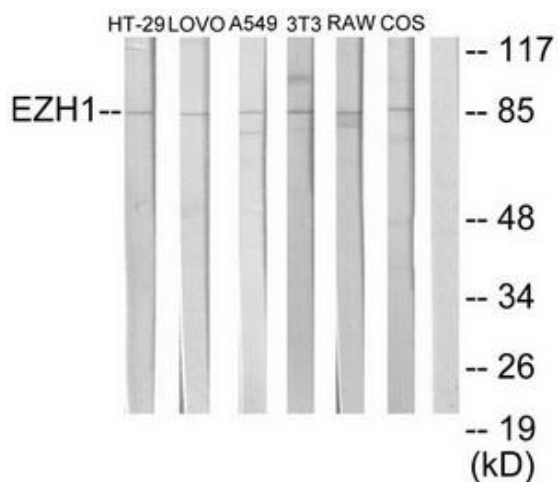
EZH1 Rabbit Polyclonal Antibody

Product data:

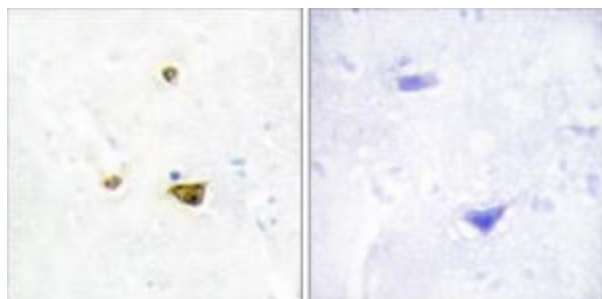
Product Type:	Primary Antibodies
Applications:	IHC, WB
Recommended Dilution:	WB: 1:500~1:3000, IHC: 1:50~1:100, ELISA: 1:5000
Reactivity:	Human, Mouse
Host:	Rabbit
Isotype:	IgG
Clonality:	Polyclonal
Immunogen:	The antiserum was produced against synthesized peptide derived from internal of human EZH1.
Formulation:	Phosphate buffered saline (without Mg ²⁺ and Ca ²⁺), pH 7.4, 150mM NaCl, 0.02% sodium azide and 50% glycerol.
Concentration:	lot specific
Purification:	The antibody was affinity-purified from rabbit antiserum by affinity-chromatography using epitope-specific immunogen.
Conjugation:	Unconjugated
Storage:	Store at -20°C as received.
Stability:	Stable for 12 months from date of receipt.
Gene Name:	enhancer of zeste 1 polycomb repressive complex 2 subunit
Database Link:	NP_001982 Entrez Gene 14055 Mouse Entrez Gene 2145 Human Q92800
Synonyms:	KMT6B
Note:	EZH1 antibody detects endogenous levels of total EZH1 protein.
Protein Families:	Druggable Genome, Transcription Factors



[View online »](#)

Product images:

Western blot analysis of extracts from HT-29 cells, LOVO cells, A549 cells, NIH-3T3 cells, RAW264.7 cells and COS-7 cells, using EZH1 antibody. The lane on the right is treated with the synthesized peptide.



Immunohistochemistry analysis of paraffin-embedded human brain tissue using EZH1 antibody. The picture on the right is treated with the synthesized peptide.