

Product datasheet for **TA313127**

GLP1 (GCG) Rabbit Polyclonal Antibody

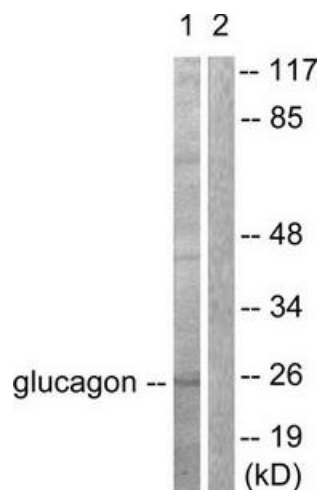
Product data:

Product Type:	Primary Antibodies
Applications:	IF, WB
Recommended Dilution:	WB: 1:500~1:3000, IF: 1:100~1:500, ELISA: 1:5000
Reactivity:	Human, Mouse, Rat
Host:	Rabbit
Isotype:	IgG
Clonality:	Polyclonal
Immunogen:	The antiserum was produced against synthesized peptide derived from human glucagon.
Formulation:	Phosphate buffered saline (without Mg ²⁺ and Ca ²⁺), pH 7.4, 150mM NaCl, 0.02% sodium azide and 50% glycerol.
Concentration:	lot specific
Purification:	The antibody was affinity-purified from rabbit antiserum by affinity-chromatography using epitope-specific immunogen.
Conjugation:	Unconjugated
Storage:	Store at -20°C as received.
Stability:	Stable for 12 months from date of receipt.
Gene Name:	glucagon
Database Link:	NP_002045 Entrez Gene 14526 Mouse Entrez Gene 24952 Rat Entrez Gene 2641 Human P01275
Synonyms:	GLP1; GLP2; GRPP
Note:	Glucagon antibody detects endogenous levels of total glucagon protein.
Protein Families:	Druggable Genome, ES Cell Differentiation/IPS, Secreted Protein

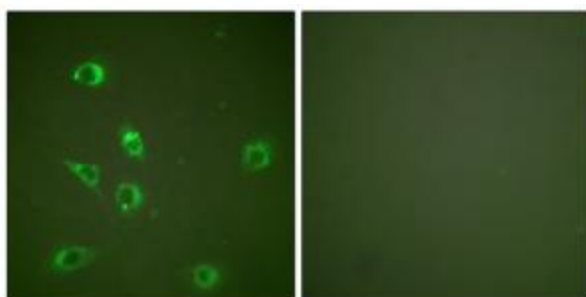


[View online »](#)

Product images:



Western blot analysis of extracts from COS7 cells, using Glucagon antibody (#TA313127). The lane on the right is treated with the synthesized peptide.



Immunofluorescence analysis of NIH/3T3 cells, using Glucagon antibody (#TA313127). The picture on the right is treated with the synthesized peptide.