

Product datasheet for **TA313125S**

GSK3 beta (GSK3B) Rabbit Polyclonal Antibody

Product data:

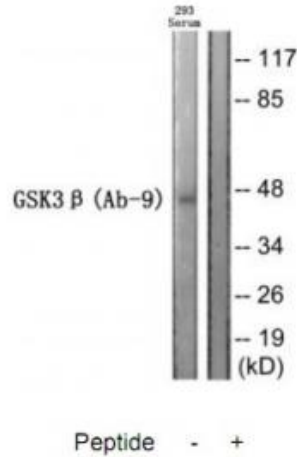
Product Type:	Primary Antibodies
Applications:	IHC, WB
Recommended Dilution:	WB: 1:500~1:3000, IHC: 1:50~1:100, ELISA: 1:10000
Reactivity:	Human, Mouse, Rat
Host:	Rabbit
Isotype:	IgG
Clonality:	Polyclonal
Immunogen:	The antiserum was produced against synthesized peptide derived from human GSK3 β
Formulation:	Phosphate buffered saline (without Mg ²⁺ and Ca ²⁺), pH 7.4, 150mM NaCl, 0.02% sodium azide and 50% glycerol.
Concentration:	lot specific
Purification:	The antibody was affinity-purified from rabbit antiserum by affinity-chromatography using epitope-specific immunogen.
Conjugation:	Unconjugated
Storage:	Store at -20°C as received.
Stability:	Stable for 12 months from date of receipt.
Gene Name:	glycogen synthase kinase 3 beta
Database Link:	NP_002084 Entrez Gene 56637 Mouse Entrez Gene 84027 Rat Entrez Gene 2932 Human P49841
Synonyms:	glycogen synthase kinase-3 beta; glycogen synthase kinase 3 beta; GSK3beta isoform
Note:	GSK3. antibody detects endogenous levels of total GSK3. protein.
Protein Families:	Druggable Genome, Protein Kinase



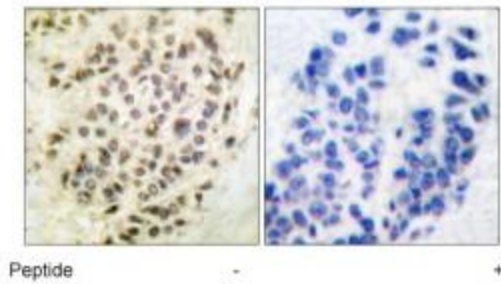
[View online »](#)

Protein Pathways:

Alzheimer's disease, Axon guidance, Basal cell carcinoma, B cell receptor signaling pathway, Cell cycle, Chemokine signaling pathway, Colorectal cancer, Endometrial cancer, ErbB signaling pathway, Focal adhesion, Hedgehog signaling pathway, Insulin signaling pathway, Melanogenesis, Neurotrophin signaling pathway, Pathways in cancer, Prostate cancer, T cell receptor signaling pathway, Wnt signaling pathway

Product images:


Western blot analysis of extracts from 293 cells treated with serum, using GSK3β (Ab-9) Antibody antibody. The lane on the right is treated with the synthesized peptide.



Immunohistochemistry analysis of paraffin-embedded human breast carcinoma tissue using GSK3β (Ab-9) Antibody antibody. The picture on the right is treated with the synthesized peptide.