

Product datasheet for **TA313120**

Cpn10 (HSPE1) Rabbit Polyclonal Antibody

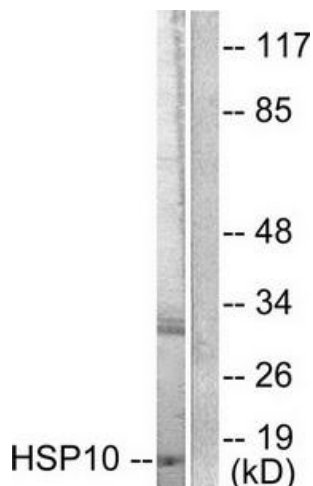
Product data:

Product Type:	Primary Antibodies
Applications:	IF, IHC, WB
Recommended Dilution:	WB: 1:500~1:3000, IHC: 1:50~1:100, IF: 1:100~1:500, ELISA: 1:10000
Reactivity:	Human, Mouse, Rat
Host:	Rabbit
Isotype:	IgG
Clonality:	Polyclonal
Immunogen:	The antiserum was produced against synthesized peptide derived from human HSP10.
Formulation:	Phosphate buffered saline (without Mg ²⁺ and Ca ²⁺), pH 7.4, 150mM NaCl, 0.02% sodium azide and 50% glycerol.
Concentration:	lot specific
Purification:	The antibody was affinity-purified from rabbit antiserum by affinity-chromatography using epitope-specific immunogen.
Conjugation:	Unconjugated
Storage:	Store at -20°C as received.
Stability:	Stable for 12 months from date of receipt.
Gene Name:	heat shock protein family E (Hsp10) member 1
Database Link:	NP_002148 Entrez Gene 15528 Mouse Entrez Gene 25462 Rat Entrez Gene 3336 Human P61604
Synonyms:	CPN10; EPF; GROES; HSP10
Note:	HSP10 antibody detects endogenous levels of total HSP10 protein.
Protein Families:	Druggable Genome, Stem cell - Pluripotency

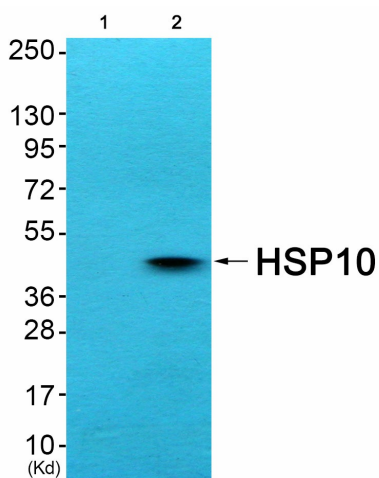


[View online »](#)

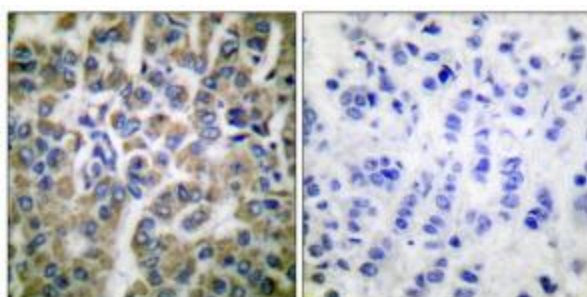
Product images:



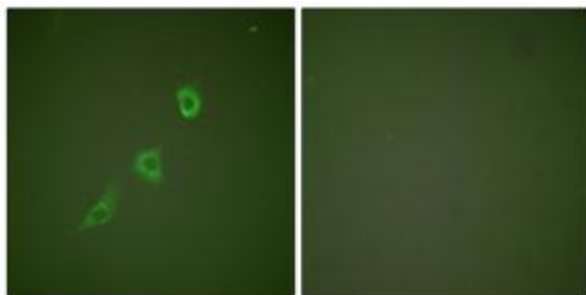
Western blot analysis of extracts from NIH/3T3 cells, using HSP10 antibody (#TA313120).The lane on the right is treated with the synthesized peptide.



Western blot analysis of extracts from COS7 cells (Lane 2), using HSP10 Antibody. The lane on the left is treated with synthesized peptide.



Immunohistochemical analysis of paraffin-embedded human breast carcinoma tissue using HSP10 antibody (#TA313120).The picture on the right is treated with the synthesized peptide.



Immunofluorescence analysis of NIH/3T3 cells, using HSP10 antibody (#TA313120). The picture on the right is treated with the synthesized peptide.