

Product datasheet for **TA313117**

Cytokeratin 19 (KRT19) Rabbit Polyclonal Antibody

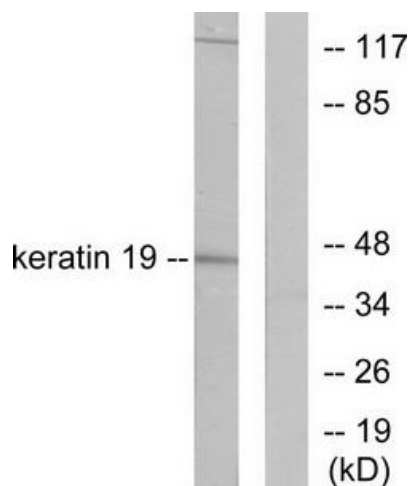
Product data:

Product Type:	Primary Antibodies
Applications:	IHC, WB
Recommended Dilution:	WB: 1:500~1:3000, IHC: 1:50~1:100, ELISA: 1:10000
Reactivity:	Human, Mouse, Rat
Host:	Rabbit
Isotype:	IgG
Clonality:	Polyclonal
Immunogen:	The antiserum was produced against synthesized peptide derived from human Keratin 19.
Formulation:	Phosphate buffered saline (without Mg ²⁺ and Ca ²⁺), pH 7.4, 150mM NaCl, 0.02% sodium azide and 50% glycerol.
Concentration:	lot specific
Purification:	The antibody was affinity-purified from rabbit antiserum by affinity-chromatography using epitope-specific immunogen.
Conjugation:	Unconjugated
Storage:	Store at -20°C as received.
Stability:	Stable for 12 months from date of receipt.
Gene Name:	keratin 19
Database Link:	NP_002267 Entrez Gene 16669 MouseEntrez Gene 360626 RatEntrez Gene 3880 Human P08727
Synonyms:	CK19; K1CS; K19
Note:	Keratin 19 antibody detects endogenous levels of total Keratin 19 protein.

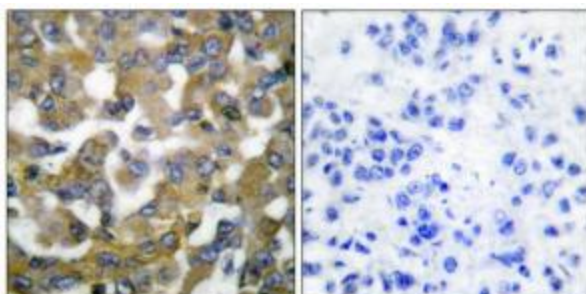


[View online »](#)

Product images:



Western blot analysis of extracts from LOVO cells, using Keratin 19 antibody (#TA313117). The lane on the right is treated with the synthesized peptide.



Immunohistochemical analysis of paraffin-embedded human breast carcinoma tissue using Keratin 19 antibody (#TA313117). The picture on the right is treated with the synthesized peptide.