

## Product datasheet for **TA313116**

### Cytokeratin 15 (KRT15) Rabbit Polyclonal Antibody

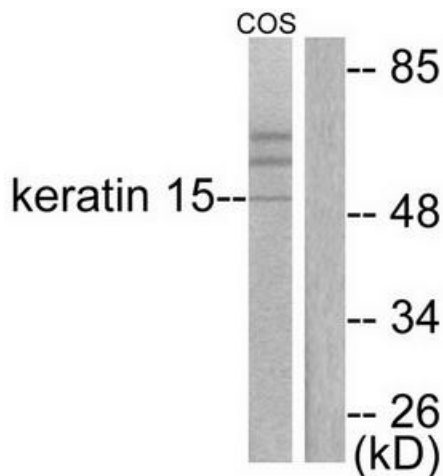
#### Product data:

Product Type:	Primary Antibodies
Applications:	IHC, WB
Recommended Dilution:	WB: 1:500~1:3000, IHC: 1:50~1:100, ELISA: 1:20000
Reactivity:	Human, Mouse, Rat
Host:	Rabbit
Isotype:	IgG
Clonality:	Polyclonal
Immunogen:	The antiserum was produced against synthesized peptide derived from human Keratin 15.
Formulation:	Phosphate buffered saline (without Mg <sup>2+</sup> and Ca <sup>2+</sup> ), pH 7.4, 150mM NaCl, 0.02% sodium azide and 50% glycerol.
Concentration:	lot specific
Purification:	The antibody was affinity-purified from rabbit antiserum by affinity-chromatography using epitope-specific immunogen.
Conjugation:	Unconjugated
Storage:	Store at -20°C as received.
Stability:	Stable for 12 months from date of receipt.
Gene Name:	keratin 15
Database Link:	<a href="#">NP_002266</a> <a href="#">Entrez Gene 16665 MouseEntrez Gene 287700 RatEntrez Gene 3866 Human P19012</a>
Synonyms:	CK15; K1CO; K15
Note:	Keratin 15 antibody detects endogenous levels of total Keratin 15 protein.

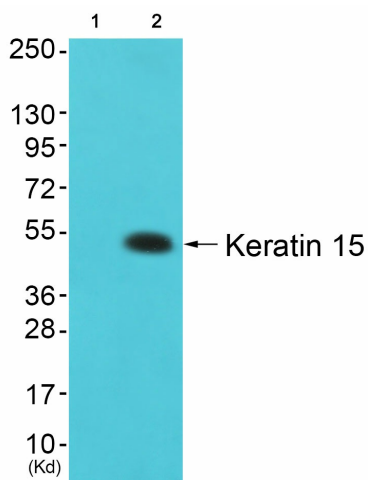


[View online »](#)

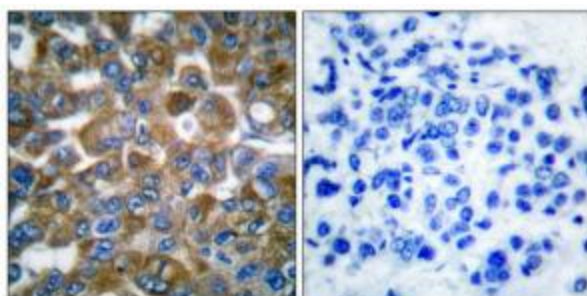
Product images:



Western blot analysis of extracts from COS7 cells, using Keratin 15 antibody (#TA313116). The lane on the right is treated with the synthesized peptide.



Western blot analysis of extracts from colo cells (Lane 2), using Keratin 15 Antibody. The lane on the left is treated with synthesized peptide.



Immunohistochemical analysis of paraffin-embedded human breast carcinoma tissue using Keratin 15 antibody (#TA313116). The picture on the right is treated with the synthesized peptide.