

## Product datasheet for **TA313109**

### LSP1 Rabbit Polyclonal Antibody

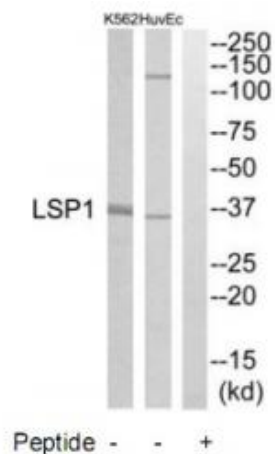
#### Product data:

Product Type:	Primary Antibodies
Applications:	WB
Recommended Dilution:	WB: 1:500~1:3000, ELISA: 1:5000
Reactivity:	Human
Host:	Rabbit
Isotype:	IgG
Clonality:	Polyclonal
Immunogen:	The antiserum was produced against synthesized peptide derived from internal of human LSP1.
Formulation:	Phosphate buffered saline (without Mg <sup>2+</sup> and Ca <sup>2+</sup> ), pH 7.4, 150mM NaCl, 0.02% sodium azide and 50% glycerol.
Concentration:	lot specific
Purification:	The antibody was affinity-purified from rabbit antiserum by affinity-chromatography using epitope-specific immunogen.
Conjugation:	Unconjugated
Storage:	Store at -20°C as received.
Stability:	Stable for 12 months from date of receipt.
Gene Name:	lymphocyte-specific protein 1
Database Link:	<a href="#">NP_002330</a> <a href="#">Entrez Gene 4046 Human</a> <a href="#">P33241</a>
Synonyms:	pp52; WP34
Note:	LSP1 antibody detects endogenous levels of total LSP1 protein.



[View online »](#)

## Product images:



Western blot analysis of extracts from HuvEc cells and K562 cells, using LSP1 antibody. The lane on the right is treated with the synthesized peptide.