

Product datasheet for **TA313108**

TACD2 (TACSTD2) Rabbit Polyclonal Antibody

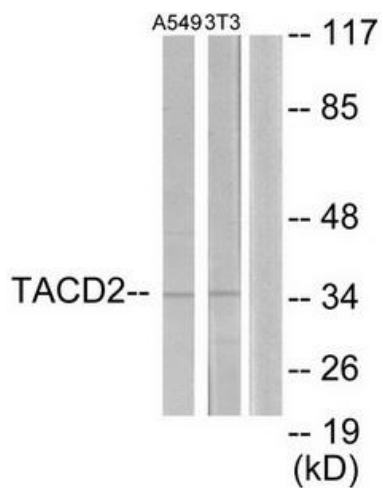
Product data:

Product Type:	Primary Antibodies
Applications:	WB
Recommended Dilution:	WB: 1:500~1:3000, ELISA: 1:5000
Reactivity:	Human, Mouse, Rat
Host:	Rabbit
Isotype:	IgG
Clonality:	Polyclonal
Immunogen:	The antiserum was produced against synthesized peptide derived from internal of human TACD2
Formulation:	Phosphate buffered saline (without Mg ²⁺ and Ca ²⁺), pH 7.4, 150mM NaCl, 0.02% sodium azide and 50% glycerol.
Concentration:	lot specific
Purification:	The antibody was affinity-purified from rabbit antiserum by affinity-chromatography using epitope-specific immunogen.
Conjugation:	Unconjugated
Storage:	Store at -20°C as received.
Stability:	Stable for 12 months from date of receipt.
Gene Name:	tumor-associated calcium signal transducer 2
Database Link:	NP_002344 Entrez Gene 56753 MouseEntrez Gene 494343 RatEntrez Gene 4070 Human P09758
Synonyms:	EGP-1; EGP1; GA733-1; GA7331; GP50; M1S1; TROP2
Note:	TACD2 antibody detects endogenous levels of total TACD2 protein.
Protein Families:	Druggable Genome, Transmembrane



[View online »](#)

Product images:



Western blot analysis of extracts from A549 cells and NIH-3T3 cells, using TACD2 antibody. The lane on the right is treated with the synthesized peptide.