

## Product datasheet for **TA313106**

### MCM3 Rabbit Polyclonal Antibody

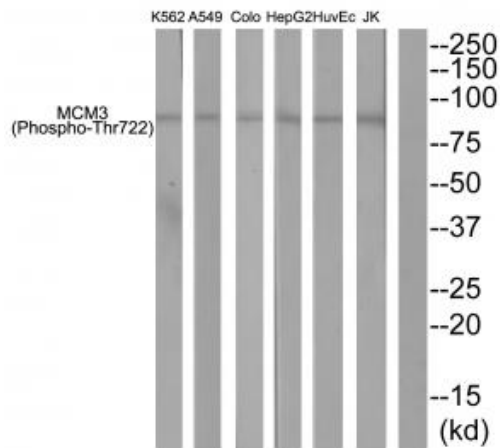
#### Product data:

Product Type:	Primary Antibodies
Applications:	WB
Recommended Dilution:	WB: 1:500~1:3000, ELISA: 1:10000
Reactivity:	Human, Mouse, Rat
Modifications:	Phospho-specific
Host:	Rabbit
Isotype:	IgG
Clonality:	Polyclonal
Immunogen:	The antiserum was produced against synthesized phosphopeptide derived from human MCM3 around the phosphorylation site of threonine 722.
Formulation:	Phosphate buffered saline (without Mg <sup>2+</sup> and Ca <sup>2+</sup> ), pH 7.4, 150mM NaCl, 0.02% sodium azide and 50% glycerol.
Concentration:	lot specific
Purification:	The antibody was affinity-purified from rabbit antiserum by affinity-chromatography using epitope-specific immunogen.
Conjugation:	Unconjugated
Storage:	Store at -20°C as received.
Stability:	Stable for 12 months from date of receipt.
Gene Name:	minichromosome maintenance complex component 3
Database Link:	<a href="#">NP_002379</a> <a href="#">Entrez Gene 17215 Mouse</a> <a href="#">Entrez Gene 316273 Rat</a> <a href="#">Entrez Gene 4172 Human</a> <a href="#">P25205</a>
Synonyms:	HCC5; P1-MCM3; P1.h; RLFB
Note:	MCM3 (Phospho-Thr722) antibody detects endogenous levels of MCM3 only when phosphorylated at threonine 722.
Protein Families:	Druggable Genome, Stem cell - Pluripotency, Transcription Factors
Protein Pathways:	Cell cycle, DNA replication

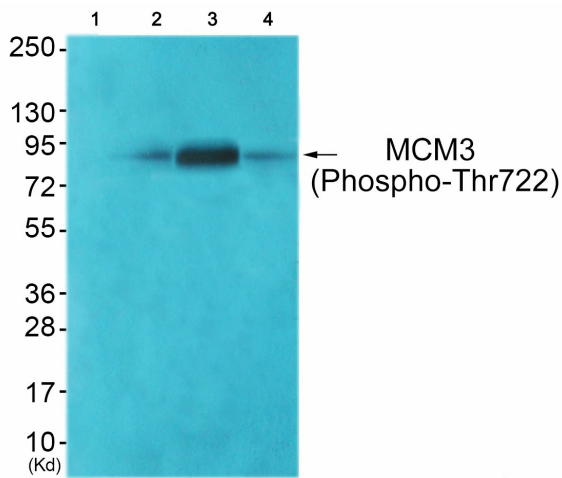


[View online »](#)

Product images:



Western blot analysis of extracts from K562 cells, A549 cells, COLO cells, HepG2 cells, HuvEc cells and JurKat cells, using MCM3 (Phospho-Thr722) antibody. The lane on the right is treated with the synthesized peptide.



Western blot analysis of extracts from COS7 cells (Lane 2), JK cells (Lane 3) and HuvEc cells (Lane 4), using MCM3 (Phospho-Thr722) Antibody. The lane on the left is treated with synthesized peptide.