

Product datasheet for **TA313105**

MEKK3 (MAP3K3) Rabbit Polyclonal Antibody

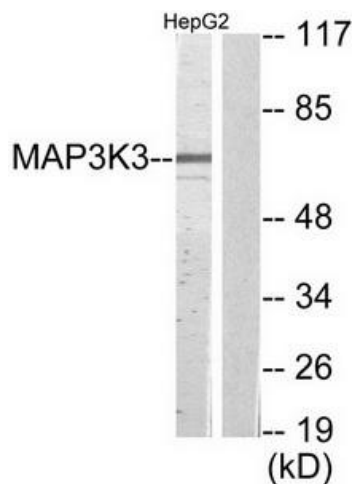
Product data:

Product Type:	Primary Antibodies
Applications:	WB
Recommended Dilution:	WB: 1:500~1:3000, ELISA: 1:20000
Reactivity:	Human, Mouse
Host:	Rabbit
Isotype:	IgG
Clonality:	Polyclonal
Immunogen:	The antiserum was produced against synthesized peptide derived from internal of human MAP3K3.
Formulation:	Phosphate buffered saline (without Mg ²⁺ and Ca ²⁺), pH 7.4, 150mM NaCl, 0.02% sodium azide and 50% glycerol.
Concentration:	lot specific
Purification:	The antibody was affinity-purified from rabbit antiserum by affinity-chromatography using epitope-specific immunogen.
Conjugation:	Unconjugated
Storage:	Store at -20°C as received.
Stability:	Stable for 12 months from date of receipt.
Gene Name:	mitogen-activated protein kinase kinase kinase 3
Database Link:	NP_002392 Entrez Gene 26406 Mouse Entrez Gene 4215 Human Q99759
Synonyms:	MAPKKK3; MEKK3
Note:	MAP3K3 antibody detects endogenous levels of total MAP3K3 protein.
Protein Families:	Druggable Genome, Protein Kinase
Protein Pathways:	GnRH signaling pathway, MAPK signaling pathway, Neurotrophin signaling pathway

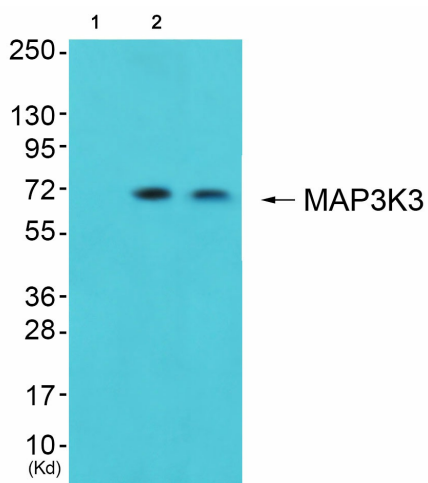


[View online »](#)

Product images:



Western blot analysis of extracts from HepG2 cells, using MAP3K3 antibody. The lane on the right is treated with the synthesized peptide.



Western blot analysis of extracts from 3T3 cells (Lane 2) and HeLa cells (Lane 3), using MAP3K3 Antibody. The lane on the left is treated with synthesized peptide.