

Product datasheet for **TA313104**

Mammaglobin A (SCGB2A2) Rabbit Polyclonal Antibody

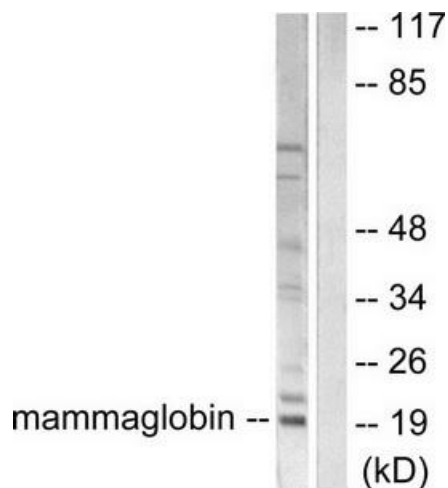
Product data:

Product Type:	Primary Antibodies
Applications:	IF, IHC, WB
Recommended Dilution:	WB: 1:500~1:3000, IHC: 1:50~1:100, IF: 1:100~1:500, ELISA: 1:1000
Reactivity:	Human, Rat
Host:	Rabbit
Isotype:	IgG
Clonality:	Polyclonal
Immunogen:	The antiserum was produced against synthesized peptide derived from human mammaglobin .
Formulation:	Phosphate buffered saline (without Mg ²⁺ and Ca ²⁺), pH 7.4, 150mM NaCl, 0.02% sodium azide and 50% glycerol.
Concentration:	lot specific
Purification:	The antibody was affinity-purified from rabbit antiserum by affinity-chromatography using epitope-specific immunogen.
Conjugation:	Unconjugated
Storage:	Store at -20°C as received.
Stability:	Stable for 12 months from date of receipt.
Gene Name:	secretoglobin family 2A member 2
Database Link:	NP_002402 Entrez Gene 361725 Rat Entrez Gene 4250 Human Q13296
Synonyms:	MGB1; UGB2
Note:	Mammaglobin antibody detects endogenous levels of total mammaglobin protein.

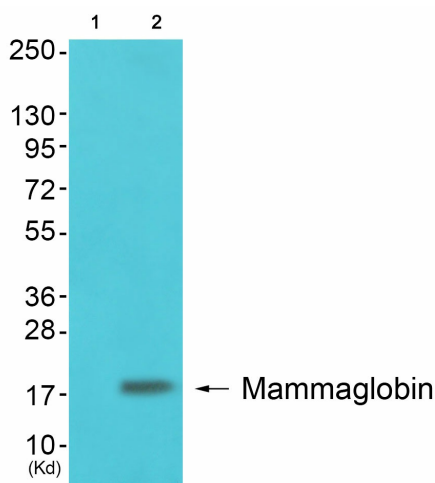


[View online »](#)

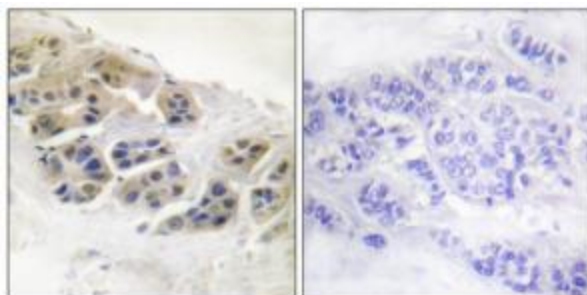
Product images:



Western blot analysis of extracts from HepG2 cells, using Mammaglobin Antibody (#TA313104). The lane on the right is treated with the synthesized peptide.



Western blot analysis of extracts from Colo cells (Lane 2), using Mammaglobin Antibody. The lane on the left is treated with synthesized peptide.



Immunohistochemistry analysis of paraffin-embedded human breast carcinoma tissue using Mammaglobin Antibody (#TA313104). The picture on the right is treated with the synthesized peptide.



Immunofluorescence analysis of HepG2 cells, using Mammaglobin Antibody (#TA313104). The picture on the right is treated with the synthesized peptide.