

Product datasheet for **TA313103**

MMP3 Rabbit Polyclonal Antibody

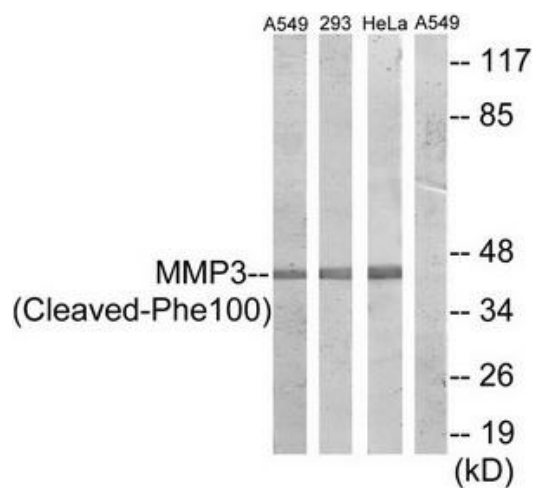
Product data:

Product Type:	Primary Antibodies
Applications:	WB
Recommended Dilution:	WB: 1:500~1:3000, ELISA: 1:20000
Reactivity:	Human
Host:	Rabbit
Isotype:	IgG
Clonality:	Polyclonal
Immunogen:	The antiserum was produced against synthesized peptide derived from human MMP3.
Formulation:	Phosphate buffered saline (without Mg ²⁺ and Ca ²⁺), pH 7.4, 150mM NaCl, 0.02% sodium azide and 50% glycerol.
Concentration:	lot specific
Purification:	The antibody was affinity-purified from rabbit antiserum by affinity-chromatography using epitope-specific immunogen.
Conjugation:	Unconjugated
Storage:	Store at -20°C as received.
Stability:	Stable for 12 months from date of receipt.
Gene Name:	matrix metalloproteinase 3
Database Link:	NP_002413 Entrez Gene 4314 Human P08254
Synonyms:	CHDS6; MMP-3; SL-1; STMY; STMY1; STR1
Note:	MMP3 (Cleaved-Phe100) antibody detects endogenous levels of fragment of activated MMP3 resulting from cleavage adjacent to Phe100.
Protein Families:	Druggable Genome, Protease



[View online »](#)

Product images:



Western blot analysis of extracts from A549 cells and HeLa cells treated with etoposide (25uM, 24hours), 293 cells treated with etoposide (25uM, 1hour), using MMP3 (Cleaved-Phe100) antibody. The lane on the right is treated with the synthesized peptide.