

Product datasheet for **TA313102**

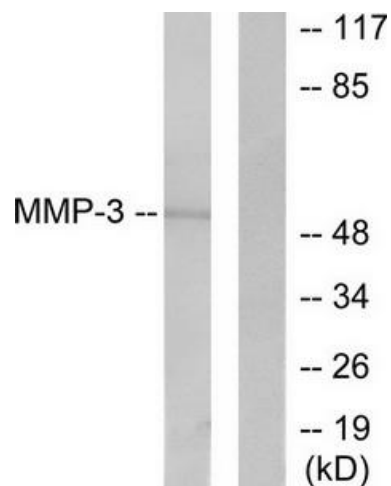
MMP3 Rabbit Polyclonal Antibody

Product data:

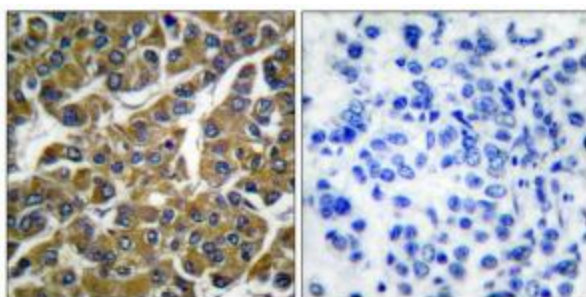
Product Type:	Primary Antibodies
Applications:	IHC, WB
Recommended Dilution:	WB: 1:500~1:3000, IHC: 1:50~1:100, ELISA: 1:10000
Reactivity:	Human, Mouse, Rat
Host:	Rabbit
Isotype:	IgG
Clonality:	Polyclonal
Immunogen:	The antiserum was produced against synthesized peptide derived from human MMP-3.
Formulation:	Phosphate buffered saline (without Mg ²⁺ and Ca ²⁺), pH 7.4, 150mM NaCl, 0.02% sodium azide and 50% glycerol.
Concentration:	lot specific
Purification:	The antibody was affinity-purified from rabbit antiserum by affinity-chromatography using epitope-specific immunogen.
Conjugation:	Unconjugated
Storage:	Store at -20°C as received.
Stability:	Stable for 12 months from date of receipt.
Gene Name:	matrix metalloproteinase 3
Database Link:	NP_002413 Entrez Gene 17392 Mouse Entrez Gene 171045 Rat Entrez Gene 4314 Human P08254
Synonyms:	CHDS6; MMP-3; SL-1; STMY; STMY1; STR1
Note:	MMP-3 antibody detects endogenous levels of total MMP-3 protein.
Protein Families:	Druggable Genome, Protease



[View online »](#)

Product images:

Western blot analysis of extracts from 293 cells, using MMP-3 antibody (#TA313102). The lane on the right is treated with the synthesized peptide.



Immunohistochemical analysis of paraffin-embedded human breast carcinoma tissue using MMP-3 antibody (#TA313102). The picture on the right is treated with the synthesized peptide.