

Product datasheet for **TA313099**

MMP1 Rabbit Polyclonal Antibody

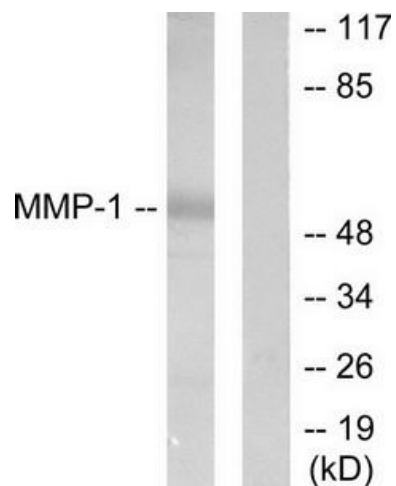
Product data:

Product Type:	Primary Antibodies
Applications:	WB
Recommended Dilution:	WB: 1:500~1:3000, ELISA: 1:20000
Reactivity:	Human
Host:	Rabbit
Isotype:	IgG
Clonality:	Polyclonal
Immunogen:	The antiserum was produced against synthesized peptide derived from human MMP-1 antibody.
Formulation:	Phosphate buffered saline (without Mg ²⁺ and Ca ²⁺), pH 7.4, 150mM NaCl, 0.02% sodium azide and 50% glycerol.
Concentration:	lot specific
Purification:	The antibody was affinity-purified from rabbit antiserum by affinity-chromatography using epitope-specific immunogen.
Conjugation:	Unconjugated
Storage:	Store at -20°C as received.
Stability:	Stable for 12 months from date of receipt.
Gene Name:	matrix metalloproteinase 1
Database Link:	NP_002412 Entrez Gene 4312 Human P03956
Synonyms:	CLG; CLGN
Note:	MMP-1 antibody detects endogenous levels of total MMP-1 protein.
Protein Families:	Druggable Genome, Protease, Secreted Protein
Protein Pathways:	Bladder cancer, Pathways in cancer, PPAR signaling pathway



[View online »](#)

Product images:



Western blot analysis of extracts from HepG2 cells, using MMP-1 antibody (#TA313099). The lane on the right is treated with the synthesized peptide.